



# INTERNATIONAL GEMOLOGICAL INSTITUTE

ELECTRONIC COPY

## LABORATORY GROWN DIAMOND REPORT

LG650484661

### LABORATORY GROWN DIAMOND REPORT

#### IGI LABORATORY GROWN DIAMOND IDENTIFICATION REPORT

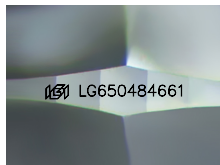
October 21, 2024  
IGI Report Number LG650484661  
Description LABORATORY GROWN DIAMOND  
Shape and Cutting Style ROUND BRILLIANT  
Measurements 8.03 - 8.06 X 4.99 MM

#### GRADING RESULTS

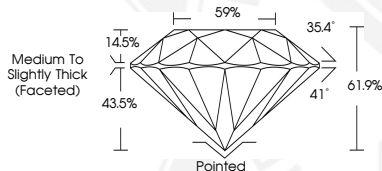
Carat Weight 2.01 CARATS  
Color Grade D  
Clarity Grade VVS 1  
Cut Grade IDEAL

#### ADDITIONAL GRADING INFORMATION

Polish EXCELLENT  
Symmetry EXCELLENT  
Fluorescence NONE  
Inscription(s) IGI LG650484661



Sample Image Used



#### IGI LABORATORY GROWN DIAMOND ID REPORT

October 21, 2024  
IGI Report Number LG650484661  
ROUND BRILLIANT  
8.03 - 8.06 X 4.99 MM  
Carat Weight 2.01 CARATS  
Color Grade D  
Clarity Grade VVS 1  
Cut Grade IDEAL  
Polish EXCELLENT  
Symmetry EXCELLENT  
Fluorescence NONE  
Inscription(s) IGI LG650484661

#### IGI LABORATORY GROWN DIAMOND ID REPORT

October 21, 2024  
IGI Report Number LG650484661  
ROUND BRILLIANT  
8.03 - 8.06 X 4.99 MM  
Carat Weight 2.01 CARATS  
Color Grade D  
Clarity Grade VVS 1  
Cut Grade IDEAL  
Polish EXCELLENT  
Symmetry EXCELLENT  
Fluorescence NONE  
Inscription(s) IGI LG650484661



THIS DOCUMENT WAS PRODUCED WITH THE FOLLOWING SECURITY MEASURES: SPECIAL DOCUMENT PAPER, INK SCREENS, WATERMARK, BACKGROUND DESIGN, HOLOGRAM AND OTHER SECURITY FEATURES NOT LISTED AND DO EXCEED DOCUMENT SECURITY INDUSTRY GUIDELINES.

For terms & conditions and to verify this report, please visit [www.igi.org](http://www.igi.org)