



INTERNATIONAL GEMOLOGICAL INSTITUTE

ELECTRONIC COPY

LABORATORY GROWN DIAMOND REPORT

LG650484575

LABORATORY GROWN DIAMOND REPORT

IGI LABORATORY GROWN DIAMOND IDENTIFICATION REPORT

October 21, 2024

IGI Report Number

LG650484575

Description

LABORATORY GROWN DIAMOND

Shape and Cutting Style

ROUND BRILLIANT

Measurements

8.09 - 8.13 X 5.02 MM

GRADING RESULTS

Carat Weight

2.02 CARATS

Color Grade

D

Clarity Grade

VVS 1

Cut Grade

IDEAL

ADDITIONAL GRADING INFORMATION

Polish

EXCELLENT

Symmetry

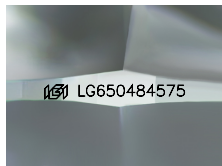
EXCELLENT

Fluorescence

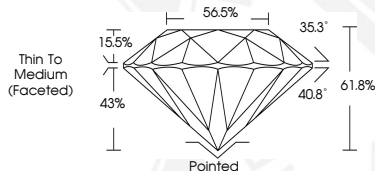
NONE

Inscription(s)

LG650484575



Sample Image Used



THIS DOCUMENT WAS PRODUCED WITH THE FOLLOWING SECURITY MEASURES: SPECIAL DOCUMENT PAPER, INK SCREENS, WATERMARK, BACKGROUND DESIGN, HOLOGRAM AND OTHER SECURITY FEATURES NOT LISTED AND DO EXCEED DOCUMENT SECURITY INDUSTRY GUIDELINES.

For terms & conditions and to verify this report, please visit www.igi.org

IGI LABORATORY GROWN DIAMOND ID REPORT

October 21, 2024

IGI Report Number LG650484575

ROUND BRILLIANT

8.09 - 8.13 X 5.02 MM

Carat Weight 2.02 CARATS

Color Grade D

Clarity Grade VVS 1

Cut Grade IDEAL

Polish EXCELLENT

Symmetry EXCELLENT

Fluorescence NONE

Inscription(s) LG650484575

IGI LABORATORY GROWN DIAMOND ID REPORT

October 21, 2024

IGI Report Number LG650484575

ROUND BRILLIANT

8.09 - 8.13 X 5.02 MM

Carat Weight 2.02 CARATS

Color Grade D

Clarity Grade VVS 1

Cut Grade IDEAL

Polish EXCELLENT

Symmetry EXCELLENT

Fluorescence NONE

Inscription(s) LG650484575