




# INTERNATIONAL GEMOLOGICAL INSTITUTE

ELECTRONIC COPY

## LABORATORY GROWN DIAMOND REPORT

LG650484561

### IGI LABORATORY GROWN DIAMOND ID REPORT

October 21, 2024  
IGI Report Number **LG650484561**  
**ROUND BRILLIANT**  
**8.07 - 8.10 X 5.09 MM**  
Carat Weight 2.04 CARATS  
Color Grade D  
Clarity Grade VS 2  
Cut Grade EXCELLENT  
Polish EXCELLENT  
Symmetry EXCELLENT  
Fluorescence NONE  
Inscription(s)  LG650484561

## LABORATORY GROWN DIAMOND REPORT

### IGI LABORATORY GROWN DIAMOND IDENTIFICATION REPORT

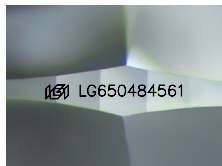
October 21, 2024  
IGI Report Number LG650484561  
Description LABORATORY GROWN DIAMOND  
Shape and Cutting Style ROUND BRILLIANT  
Measurements 8.07 - 8.10 X 5.09 MM

### GRADING RESULTS

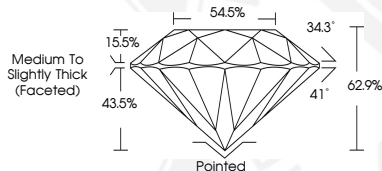
Carat Weight 2.04 CARATS  
Color Grade D  
Clarity Grade VS 2  
Cut Grade EXCELLENT

### ADDITIONAL GRADING INFORMATION

Polish EXCELLENT  
Symmetry EXCELLENT  
Fluorescence NONE  
Inscription(s)  LG650484561



Sample Image Used



### IGI LABORATORY GROWN DIAMOND ID REPORT

October 21, 2024  
IGI Report Number **LG650484561**  
**ROUND BRILLIANT**  
**8.07 - 8.10 X 5.09 MM**  
Carat Weight 2.04 CARATS  
Color Grade D  
Clarity Grade VS 2  
Cut Grade EXCELLENT  
Polish EXCELLENT  
Symmetry EXCELLENT  
Fluorescence NONE  
Inscription(s)  LG650484561



THIS DOCUMENT WAS PRODUCED WITH THE FOLLOWING SECURITY MEASURES: SPECIAL DOCUMENT PAPER, INK SCREENS, WATERMARK, BACKGROUND DESIGN, HOLOGRAM AND OTHER SECURITY FEATURES NOT LISTED AND DO EXCEED DOCUMENT SECURITY INDUSTRY GUIDELINES.

For terms & conditions and to verify this report, please visit [www.igi.org](http://www.igi.org)