



# INTERNATIONAL GEMOLOGICAL INSTITUTE

ELECTRONIC COPY

## LABORATORY GROWN DIAMOND REPORT

LG650481089

### IGI LABORATORY GROWN DIAMOND ID REPORT

September 20, 2024

IGI Report Number **LG650481089**

#### PRINCESS CUT

**6.98 X 6.97 X 5.01 MM**

|                |                 |
|----------------|-----------------|
| Carat Weight   | 2.08 CARATS     |
| Color Grade    | E               |
| Clarity Grade  | VVS 1           |
| Cut Grade      | EXCELLENT       |
| Polish         | EXCELLENT       |
| Symmetry       | EXCELLENT       |
| Fluorescence   | NONE            |
| Inscription(s) | IGI LG650481089 |

## LABORATORY GROWN DIAMOND REPORT

### IGI LABORATORY GROWN DIAMOND IDENTIFICATION REPORT

September 20, 2024

IGI Report Number **LG650481089**

Description **LABORATORY GROWN DIAMOND**

Shape and Cutting Style **PRINCESS CUT**

Measurements **6.98 X 6.97 X 5.01 MM**

#### GRADING RESULTS

Carat Weight **2.08 CARATS**

Color Grade **E**

Clarity Grade **VVS 1**

Cut Grade **EXCELLENT**

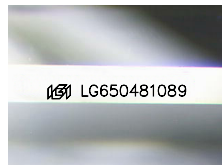
#### ADDITIONAL GRADING INFORMATION

Polish **EXCELLENT**

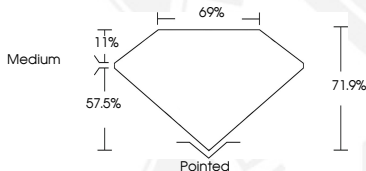
Symmetry **EXCELLENT**

Fluorescence **NONE**

Inscription(s) **IGI LG650481089**



Sample Image Used



### IGI LABORATORY GROWN DIAMOND ID REPORT

September 20, 2024

IGI Report Number **LG650481089**

#### PRINCESS CUT

**6.98 X 6.97 X 5.01 MM**

|                |                 |
|----------------|-----------------|
| Carat Weight   | 2.08 CARATS     |
| Color Grade    | E               |
| Clarity Grade  | VVS 1           |
| Cut Grade      | EXCELLENT       |
| Polish         | EXCELLENT       |
| Symmetry       | EXCELLENT       |
| Fluorescence   | NONE            |
| Inscription(s) | IGI LG650481089 |



THIS DOCUMENT WAS PRODUCED WITH THE FOLLOWING SECURITY MEASURES: SPECIAL DOCUMENT PAPER, INK SCREENS, WATERMARK, BACKGROUND DESIGN, HOLOGRAM AND OTHER SECURITY FEATURES NOT LISTED AND DO EXCEED DOCUMENT SECURITY INDUSTRY GUIDELINES.

For terms & conditions and to verify this report, please visit [www.igi.org](http://www.igi.org)