



ELECTRONIC COPY

LABORATORY GROWN DIAMOND REPORT

October 17, 2024	
IGI Report Number	LG649485777
Description	LABORATORY GROWN DIAMOND
Shape and Cutting Style	PRINCESS CUT
Measurements	6.31 X 6.17 X 4.64 MM

GRADING RESULTS

Carat Weight	1.52 CARAT
Color Grade	E
Clarity Grade	VVS 2

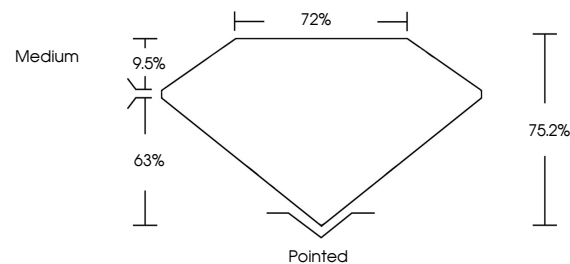
ADDITIONAL GRADING INFORMATION

Polish	EXCELLENT
Symmetry	EXCELLENT
Fluorescence	NONE
Inscription(s)	 LG649485777

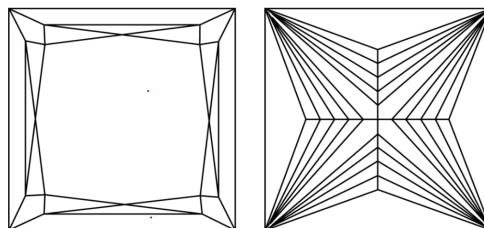
Comments: This Laboratory Grown Diamond was created by Chemical Vapor Deposition (CVD) growth process.
Type IIa

LG649485777
Report verification at igi.org

PROPORTIONS

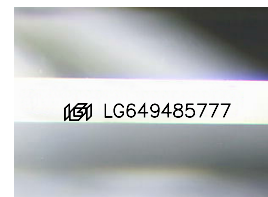


CLARITY CHARACTERISTICS



KEY TO SYMBOLS

Red symbols indicate internal characteristics.
Green symbols indicate external characteristics.



Sample Image Used

COLOR

D E F G H I J Faint Very Light Light

CLARITY

IF	VS ¹⁻²	VS ¹⁻²	SI ¹⁻²	I ¹⁻³
Internally Flawless	Very Very Slightly Included	Very Slightly Included	Slightly Included	Included

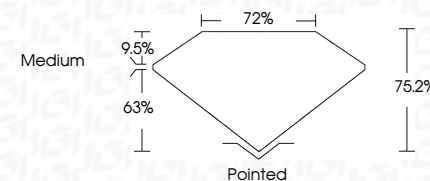
LABORATORY GROWN DIAMOND REPORT



October 17, 2024	
IGI Report Number	LG649485777
Description	LABORATORY GROWN DIAMOND
Shape and Cutting Style	PRINCESS CUT
Measurements	6.31 X 6.17 X 4.64 MM

GRADING RESULTS

Carat Weight	1.52 CARAT
Color Grade	E
Clarity Grade	VVS 2



ADDITIONAL GRADING INFORMATION

Polish	EXCELLENT
Symmetry	EXCELLENT
Fluorescence	NONE
Inscription(s)	 LG649485777
<p>Comments: This Laboratory Grown Diamond was created by Chemical Vapor Deposition (CVD) growth process.</p> <p>Type IIa</p>	



© IGI 2020, International Gemological Institute

FD - 10 20



THIS DOCUMENT WAS PRODUCED WITH THE FOLLOWING SECURITY MEASURES: SPECIAL DOCUMENT PAPER, INK SCREENS, WATERMARK, BACKGROUND DESIGNS, HOLOGRAM AND OTHER SECURITY FEATURES NOT LISTED AND DO EXCEED DOCUMENT SECURITY INDUSTRY GUIDELINES

October 17, 2024
 IGI Report No LG649485777
 PRINCESS CLIT

3.31 X 6.17 X 4.64 MM	1.52 CARAT E	VVS 2	75.2%	72%	Medium	Pointed	EXCELLENT	EXCELLENT	NONE	4041 C4540482772
Color Grade	Clarity Grade	Depth	Table	Grade	Culet	Polish	Symmetry	Fluorescence		

Comments:
This Laboratory Grown Diamond was created by Chemical Vapor Deposition (CVD) growth process.

www.igi.org