



ELECTRONIC COPY

LABORATORY GROWN DIAMOND REPORT

September 5, 2024
IGI Report Number LG649460819
Description LABORATORY GROWN DIAMOND
Shape and Cutting Style EMERALD CUT
Measurements 7.76 X 5.44 X 3.72 MM

GRADING RESULTS

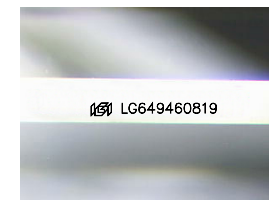
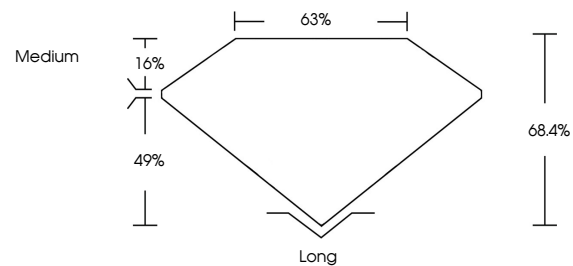
Carat Weight 1.57 CARAT
Color Grade E
Clarity Grade VVS 2

ADDITIONAL GRADING INFORMATION

Polish EXCELLENT
Symmetry EXCELLENT
Fluorescence NONE
Inscription(s) IGI LG649460819

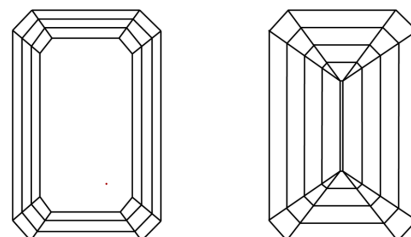
Comments: This Laboratory Grown Diamond was created by Chemical Vapor Deposition (CVD) growth process. Type IIa

PROPORTIONS



Sample Image Used

CLARITY CHARACTERISTICS



KEY TO SYMBOLS

Red symbols indicate internal characteristics.
Green symbols indicate external characteristics.

COLOR

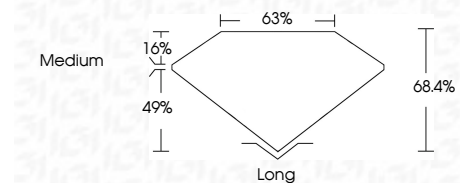
D E F G H I J Faint Very Light Light

CLARITY

IF VS 1-2 VS 1-2 SI 1-2 I 1-3
Internally Flawless Very Very Slightly Included Very Slightly Included Slightly Included Included



September 5, 2024
IGI Report Number LG649460819
Description LABORATORY GROWN DIAMOND
Shape and Cutting Style EMERALD CUT
Measurements 7.76 X 5.44 X 3.72 MM
GRADING RESULTS
Carat Weight 1.57 CARAT
Color Grade E
Clarity Grade VVS 2



ADDITIONAL GRADING INFORMATION

Polish EXCELLENT
Symmetry EXCELLENT
Fluorescence NONE
Inscription(s) IGI LG649460819
Comments: This Laboratory Grown Diamond was created by Chemical Vapor Deposition (CVD) growth process. Type IIa



IGI



September 5, 2024
IGI Report No LG649460819
EMERALD CUT
1.57 CARAT E
Color Grade VVS 2
Depth 49%
Table 16%
Girdle 63%
Medium
Long
Cutlet EXCELLENT
Polish EXCELLENT
Symmetry EXCELLENT
Fluorescence NONE
Inscription(s) IGI LG649460819
Comments: This Laboratory Grown Diamond was created by Chemical Vapor Deposition (CVD) growth process. Type IIa