



ELECTRONIC COPY

LG649434421
Report verification at igi.org



September 11, 2024
IGI Report Number **LG649434421**
Description **LABORATORY GROWN DIAMOND**
Shape and Cutting Style **RHOMBOID LEAF MIXED CUT**
Measurements **7.99 X 5.93 X 3.69 MM**

GRADING RESULTS

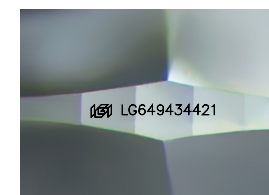
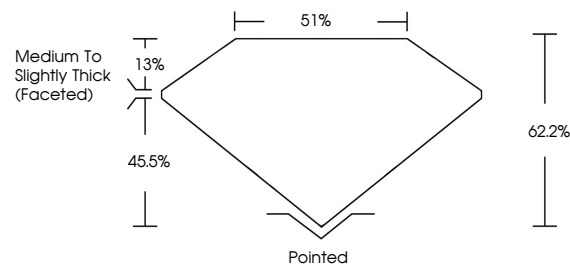
Carat Weight **1.01 CARAT**
Color Grade **E**
Clarity Grade **VVS 2**

September 11, 2024
IGI Report Number **LG649434421**
Description **LABORATORY GROWN DIAMOND**
Shape and Cutting Style **RHOMBOID LEAF MIXED CUT**
Measurements **7.99 X 5.93 X 3.69 MM**
GRADING RESULTS
Carat Weight **1.01 CARAT**
Color Grade **E**
Clarity Grade **VVS 2**

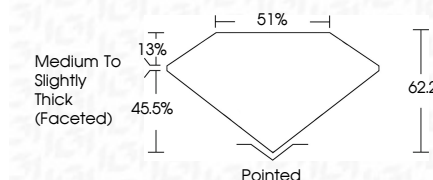
ADDITIONAL GRADING INFORMATION

Polish **VERY GOOD**
Symmetry **EXCELLENT**
Fluorescence **NONE**
Inscription(s) **IGI LG649434421**
Comments: This Laboratory Grown Diamond was created by Chemical Vapor Deposition (CVD) growth process. Type IIa

PROPORTIONS



Sample Image Used



COLOR

D E F G H I J Faint Very Light Light

CLARITY

IF	VS ¹⁻²	VS ¹⁻²	SI ¹⁻²	I ¹⁻³
Internally Flawless	Very Very Slightly Included	Very Slightly Included	Slightly Included	Included

ADDITIONAL GRADING INFORMATION

Polish **VERY GOOD**
Symmetry **EXCELLENT**
Fluorescence **NONE**
Inscription(s) **IGI LG649434421**
Comments: This Laboratory Grown Diamond was created by Chemical Vapor Deposition (CVD) growth process. Type IIa



September 11, 2024
IGI Report No **LG649434421**
RHOMBOID LEAF MIXED CUT
7.99 X 5.93 X 3.69 MM
1.01 CARAT
E
VVS 2
62.2%
51%
Medium to Slightly Thick (Faceted)
Pointed
Polish **VERY GOOD**
Symmetry **EXCELLENT**
Fluorescence **NONE**
Inscription(s) **IGI LG649434421**

Comments: This Laboratory Grown Diamond was created by Chemical Vapor Deposition (CVD) growth process. Type IIa