



ELECTRONIC COPY

LABORATORY GROWN DIAMOND REPORT

August 16, 2024	
IGI Report Number	LG648486260
Description	LABORATORY GROWN DIAMOND
Shape and Cutting Style	CUT CORNERED RECTANGULAR MIXED CUT
Measurements	7.41 X 4.80 X 2.96 MM

GRADING RESULTS

Carat Weight	1.09 CARAT
Color Grade	E
Clarity Grade	VS2

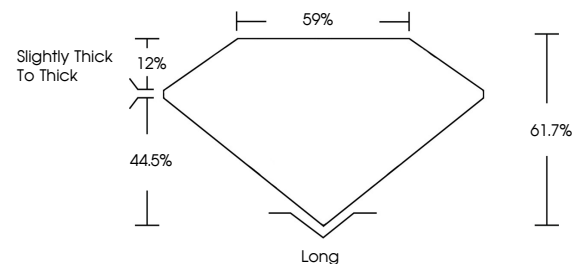
ADDITIONAL GRADING INFORMATION

Polish	EXCELLENT
Symmetry	EXCELLENT
Fluorescence	NONE
Inscription(s)	 LG648486260

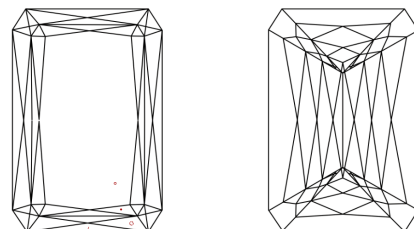
Comments: This Laboratory Grown Diamond was created by Chemical Vapor Deposition (CVD) growth process.
Type IIa

LG648486260
Report verification at [igi.org](https://www.igi.org)

PROPORTIONS

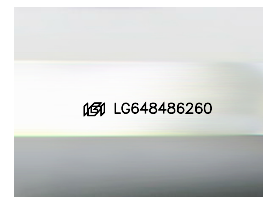


CLARITY CHARACTERISTICS



KEY TO SYMBOLS

Red symbols indicate internal characteristics.
Green symbols indicate external characteristics.



Sample Image Used

COLOR

D E F G H I J Faint Very Light Light

CLARITY

IF	VVS ^{1,2}	VS ^{1,2}	SI ^{1,2}	I ^{1,3}
Internally Flawless	Very Very Slightly Included	Very Slightly Included	Slightly Included	Included



© IGI 2020, International Gemological Institute

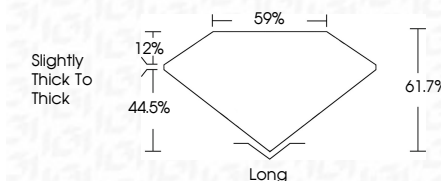
FD - 10 20

www.igi.org

LABORATORY GROWN DIAMOND REPORT



August 16, 2024	
IGI Report Number	LG648486260
Description	LABORATORY GROWN DIAMOND
Shape and Cutting Style	CUT CORNERED RECTANGULAR MIXED CUT
Measurements	7.41 X 4.80 X 2.96 MM
GRADING RESULTS	
Carat Weight	1.00 CARAT
Color Grade	E
Clarity Grade	VVS 2



ADDITIONAL GRADING INFORMATION

Polish	EXCELLENT
Symmetry	EXCELLENT
Fluorescence	NONE
Inscription(s)	 LG648486260
<p>Comments: This Laboratory Grown Diamond was created by Chemical Vapor Deposition (CVD) growth process.</p> <p>Type IIa</p>	



August 16, 2024	GL Report No. LG54648250	GL CORRIGED RECT. MIXED CUT
		1.09 CARAT
	Carat Weight	1.09 CARAT
	Color Grade	E
	Clarity Grade	VVS 2
	Depth	61.7%
	Table	59%
	Girdle	Slightly Thick to Thick
	Culet	Long
	Poleish	EXCELLENT
	Symmetry	EXCELLENT
	Fluorescence	NONE
	Inscriptions(s)	ISSI LG54648250

Comments: This is a Fancy Crown Diamond was created by Chemical Vapor Deposition (CVD) growth process.

Type IIA