



ELECTRONIC COPY

LG648484932
Report verification at igi.org



August 21, 2024
IGI Report Number **LG648484932**
Description **LABORATORY GROWN DIAMOND**
Shape and Cutting Style **CUSHION MODIFIED BRILLIANT**
Measurements **10.25 X 7.01 X 4.71 MM**
GRADING RESULTS
Carat Weight **3.01 CARATS**
Color Grade **FANCY VIVID PINK**
Clarity Grade **VS 1**

LABORATORY GROWN DIAMOND REPORT

August 21, 2024
IGI Report Number **LG648484932**
Description **LABORATORY GROWN DIAMOND**
Shape and Cutting Style **CUSHION MODIFIED BRILLIANT**
Measurements **10.25 X 7.01 X 4.71 MM**

GRADING RESULTS

Carat Weight **3.01 CARATS**
Color Grade **FANCY VIVID PINK**
Clarity Grade **VS 1**

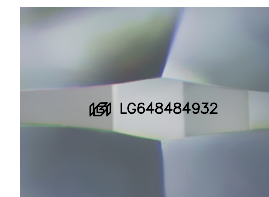
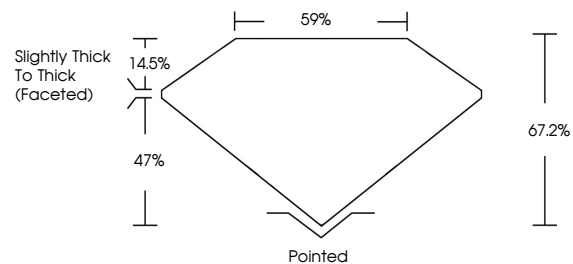
ADDITIONAL GRADING INFORMATION

Polish **EXCELLENT**
Symmetry **EXCELLENT**
Fluorescence **SLIGHT**
Inscription(s) **LG648484932**

Comments: This Laboratory Grown Diamond was created by Chemical Vapor Deposition (CVD) growth process.
Indications of post-growth treatment.

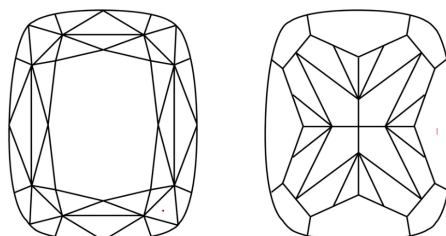
Secondary color: Brown

PROPORTIONS



Sample Image Used

CLARITY CHARACTERISTICS



KEY TO SYMBOLS

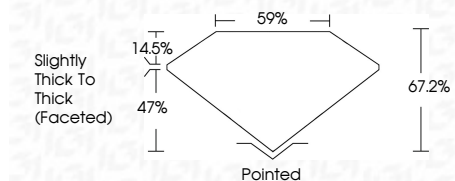
Red symbols indicate internal characteristics.
Green symbols indicate external characteristics.

COLOR

D E F G H I J Faint Very Light Light

CLARITY

IF	VS ¹⁻²	VS ¹⁻²	SI ¹⁻²	I ¹⁻³
Internally Flawless	Very Very Slightly Included	Very Slightly Included	Slightly Included	Included



ADDITIONAL GRADING INFORMATION

Polish **EXCELLENT**
Symmetry **EXCELLENT**
Fluorescence **SLIGHT**
Inscription(s) **LG648484932**
Comments: This Laboratory Grown Diamond was created by Chemical Vapor Deposition (CVD) growth process.
Indications of post-growth treatment.
Secondary color: Brown



August 21, 2024
IGI Report No **LG648484932**
CUSHION MODIFIED BRILLIANT
3.01 CARATS
Carat Weight **FANCY VIVID PINK**
Color Grade **VS 1**
Clarity Grade **67.2%**
Table **59%**
Girdle **Slightly Thick to Thick (Faceted)**
Culet **Pointed**
Polish **EXCELLENT**
Symmetry **EXCELLENT**
Fluorescence **SLIGHT**
Inscription(s) **LG648484932**

Comments: This Laboratory Grown Diamond was created by Chemical Vapor Deposition (CVD) growth process.
Indications of post-growth treatment.
Secondary color: Brown