



**ELECTRONIC COPY**

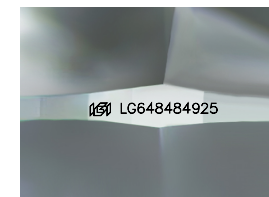
LG648484925  
Report verification at igi.org



August 14, 2024  
IGI Report Number **LG648484925**  
Description **LABORATORY GROWN DIAMOND**  
Shape and Cutting Style **SQUARE CUSHION BRILLIANT**  
Measurements **8.77 X 8.46 X 5.56 MM**

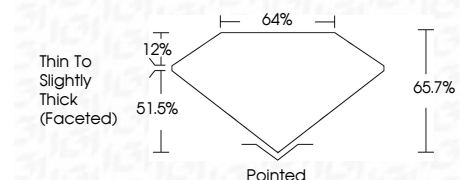
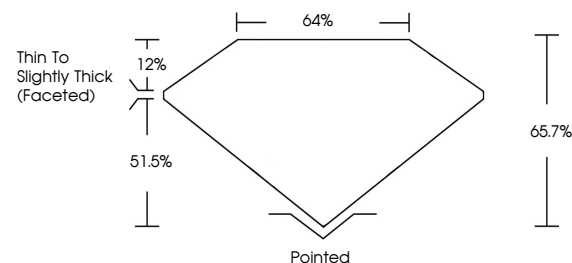
**GRADING RESULTS**

Carat Weight **3.12 CARATS**  
Color Grade **E**  
Clarity Grade **VVS 2**

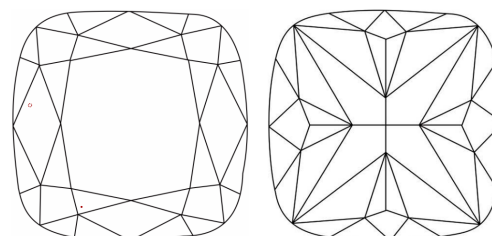


Sample Image Used

**PROPORTIONS**



**CLARITY CHARACTERISTICS**



**KEY TO SYMBOLS**

Red symbols indicate internal characteristics.  
Green symbols indicate external characteristics.

**COLOR**

D E F G H I J Faint Very Light Light

**CLARITY**

IF	VS <sup>1-2</sup>	VS <sup>1-2</sup>	SI <sup>1-2</sup>	I <sup>1-3</sup>
Internally Flawless	Very Very Slightly Included	Very Slightly Included	Slightly Included	Included

**ADDITIONAL GRADING INFORMATION**

Polish **EXCELLENT**  
Symmetry **EXCELLENT**  
Fluorescence **NONE**  
Inscription(s) **IGI LG648484925**  
Comments: This Laboratory Grown Diamond was created by Chemical Vapor Deposition (CVD) growth process. Type IIa



**IGI**



August 14, 2024  
IGI Report No **LG648484925**  
**SQUARE CUSHION BRILLIANT**  
**8.77 X 8.46 X 5.56 MM**  
Carat Weight **3.12 CARATS**  
Color Grade **E**  
Clarity Grade **VVS 2**  
Depth **65.7%**  
Table **64%**  
Girdle **Thin to Slightly Thick (Faceted)**  
Culet **Pointed**  
Polish **EXCELLENT**  
Symmetry **EXCELLENT**  
Fluorescence **NONE**  
Inscription(s) **IGI LG648484925**

Comments: This Laboratory Grown Diamond was created by Chemical Vapor Deposition (CVD) growth process. Type IIa