



ELECTRONIC COPY

LG648484916
Report verification at igi.org



August 28, 2024
IGI Report Number: LG648484916
Description: LABORATORY GROWN DIAMOND
Shape and Cutting Style: SQUARE CUSHION MODIFIED BRILLIANT
Measurements: 9.50 X 9.14 X 6.09 MM
GRADING RESULTS
Carat Weight: 5.10 CARATS
Color Grade: FANCY VIVID PINK
Clarity Grade: VS 1

LABORATORY GROWN DIAMOND REPORT

August 28, 2024
IGI Report Number: LG648484916
Description: LABORATORY GROWN DIAMOND
Shape and Cutting Style: SQUARE CUSHION MODIFIED BRILLIANT
Measurements: 9.50 X 9.14 X 6.09 MM

GRADING RESULTS

Carat Weight: 5.10 CARATS
Color Grade: FANCY VIVID PINK
Clarity Grade: VS 1

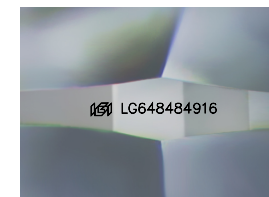
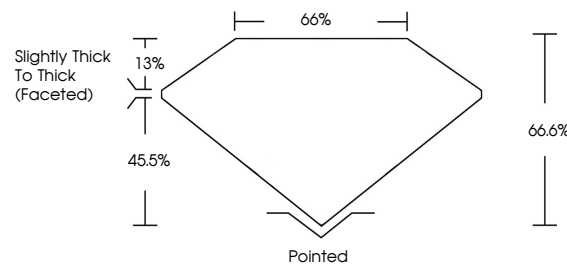
ADDITIONAL GRADING INFORMATION

Polish: EXCELLENT
Symmetry: EXCELLENT
Fluorescence: SLIGHT
Inscription(s): LG648484916

Comments: This Laboratory Grown Diamond was created by Chemical Vapor Deposition (CVD) growth process.
Indications of post-growth treatment.

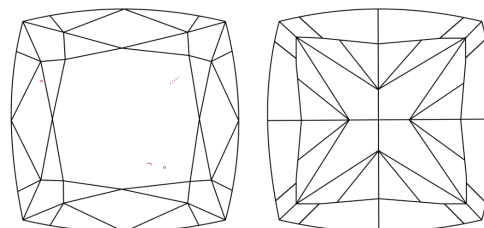
Secondary color: Orange

PROPORTIONS



Sample Image Used

CLARITY CHARACTERISTICS



KEY TO SYMBOLS

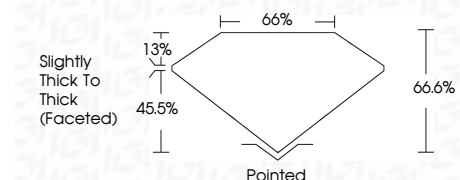
Red symbols indicate internal characteristics.
Green symbols indicate external characteristics.

COLOR

D E F G H I J Faint Very Light Light

CLARITY

IF VS 1-2 VS 1-2 SI 1-2 I 1-3
Internally Flawless Very Very Slightly Included Very Slightly Included Slightly Included Included



ADDITIONAL GRADING INFORMATION

Polish: EXCELLENT
Symmetry: EXCELLENT
Fluorescence: SLIGHT
Inscription(s): LG648484916
Comments: This Laboratory Grown Diamond was created by Chemical Vapor Deposition (CVD) growth process.
Indications of post-growth treatment.
Secondary color: Orange



August 28, 2024
IGI Report No: LG648484916
SQUARE CUSHION MODIFIED BRILLIANT
9.50 X 9.14 X 6.09 MM
5.10 CARATS
FANCY VIVID PINK
VS 1
66.6%
Slightly Thick To Thick (Faceted)
Pointed
EXCELLENT
EXCELLENT
SLIGHT
LG648484916

Comments: This Laboratory Grown Diamond was created by Chemical Vapor Deposition (CVD) growth process.
Indications of post-growth treatment.
Secondary color: Orange