



ELECTRONIC COPY

LABORATORY GROWN DIAMOND REPORT

December 3, 2024	
IGI Report Number	LG648416910
Description	LABORATORY GROWN DIAMOND
Shape and Cutting Style	OVAL BRILLIANT
Measurements	9.26 X 6.58 X 4.12 MM

GRADING RESULTS

Carat Weight	1.56 CARAT
Color Grade	E
Clarity Grade	VVS 1

ADDITIONAL GRADING INFORMATION

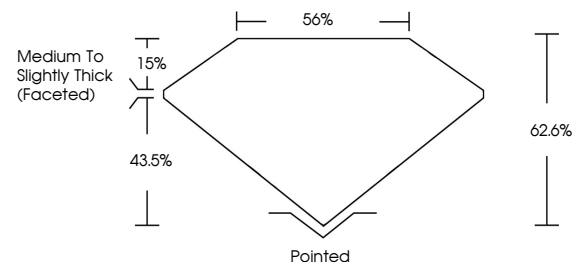
Polish	EXCELLENT
Symmetry	EXCELLENT
Fluorescence	NONE
Inscription(s)	131 LG648416910

Comments: As Grown - No indication of post-growth treatment.

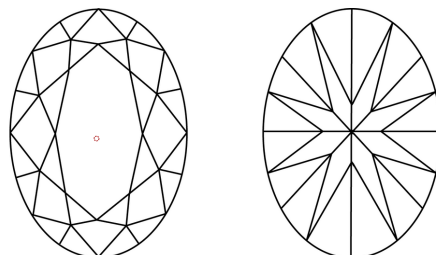
This Laboratory Grown Diamond was created by High Pressure High Temperature (HPHT) growth process.
Type II

LG648416910
Report verification at igi.org

PROPORTIONS



CLARITY CHARACTERISTICS



KEY TO SYMBOLS

Red symbols indicate internal characteristics.
Green symbols indicate external characteristics.



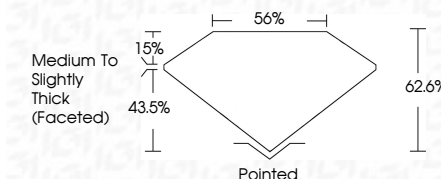
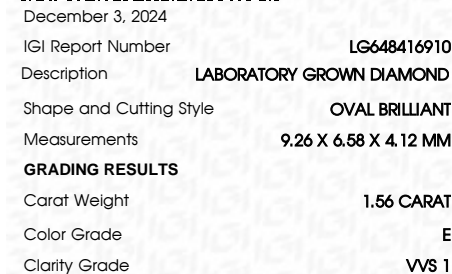
COLOR

D E F G H I J Faint Very Light Light

CLARITY

IF	VS ¹⁻²	VS ¹⁻²	SI ¹⁻²	I ¹⁻³
Internally Flawless	Very Very Slightly Included	Very Slightly Included	Slightly Included	Included

LABORATORY GROWN DIAMOND REPORT



ADDITIONAL GRADING INFORMATION

Polish	EXCELLENT
Symmetry	EXCELLENT
Fluorescence	NONE
Inscription(s)	 LG648416910
Comments: As Grown - No indication of post-growth treatment.	
This Laboratory Grown Diamond was created by High Pressure High Temperature (HPHT) growth process.	
Type II	



© IGI 2020, International Gemological Institute

FD - 10 20

www.igi.org



THIS DOCUMENT WAS PRODUCED WITH THE FOLLOWING SECURITY MEASURES: SPECIAL DOCUMENT PAPER, INK SCREENS, WATERMARK, BACKGROUND DESIGNS, HOLOGRAM AND OTHER SECURITY FEATURES NOT LISTED AND DO EXCEED DOCUMENT SECURITY INDUSTRY GUIDELINE

December 3, 2024
GI Report No LG648416910

LOVAL BRILLIANT	2.25 X 6.58 X 4.12 MM	Color Weight Color Grade	1.56 CARAT E
	Clarity Grade	VVS 1	
	Depth	62.6%	
	Table	56%	
	Grade	Medium To Slightly Thick (faceted)	
	Culet	Pointed	
	Polish	EXCELLENT	
	Symmetry	EXCELLENT	
	Fluorescence	NONE	
	Comments	see 1/24/98 at 12:10	

Comments:
As Grown - No indication of post-growth treatment.