



ELECTRONIC COPY

LG647493316
Report verification at igi.org



August 6, 2024

IGI Report Number **LG647493316**

Description **LABORATORY GROWN DIAMOND**

Shape and Cutting Style **SQUARE CUSHION BRILLIANT**

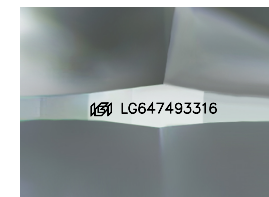
Measurements **7.58 X 7.39 X 4.92 MM**

GRADING RESULTS

Carat Weight **2.10 CARATS**

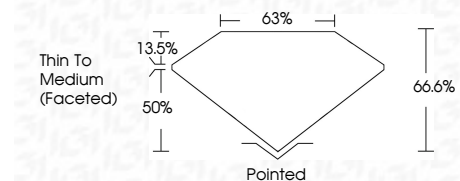
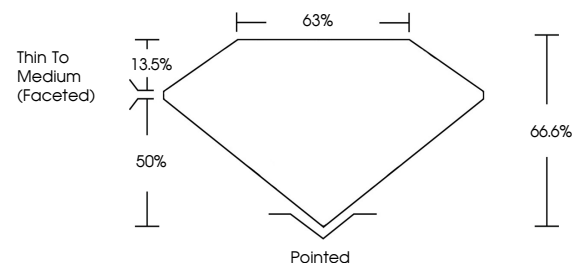
Color Grade **E**

Clarity Grade **VVS 2**

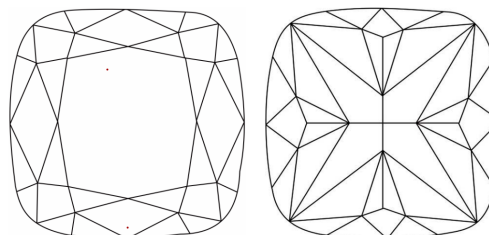


Sample Image Used

PROPORTIONS



CLARITY CHARACTERISTICS



KEY TO SYMBOLS

Red symbols indicate internal characteristics.
Green symbols indicate external characteristics.

COLOR

D E F G H I J Faint Very Light Light

CLARITY

IF	VS ¹⁻²	VS ¹⁻²	SI ¹⁻²	I ¹⁻³
Internally Flawless	Very Very Slightly Included	Very Slightly Included	Slightly Included	Included

ADDITIONAL GRADING INFORMATION

Polish **EXCELLENT**

Symmetry **EXCELLENT**

Fluorescence **NONE**

Inscription(s) **IGI LG647493316**

Comments: This Laboratory Grown Diamond was created by Chemical Vapor Deposition (CVD) growth process.
Type IIa



August 6, 2024
IGI Report No LG647493316
SQUARE CUSHION BRILLIANT
7.58 X 7.39 X 4.92 MM
2.10 CARATS
E
VVS 2
66.6%
63%
Thin To Medium (Faceted)
Pointed
EXCELLENT
EXCELLENT
NONE
IGI LG647493316
Comments: This Laboratory Grown Diamond was created by Chemical Vapor Deposition (CVD) growth process.
Type IIa