



**INTERNATIONAL  
GEMOLOGICAL  
INSTITUTE**

**ELECTRONIC COPY**

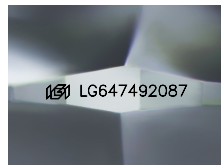
**LG647492087**



August 16, 2024  
**IGI Report Number LG647492087**  
**CUSHION BRILLIANT**  
**LABORATORY GROWN DIAMOND**  
**5.91 X 4.97 X 3.54 MM**  
 Carat Weight **0.86 CARAT**  
 Color Grade **FANCY VIVID PINK**  
 Clarity Grade **VVS 1**  
 Polish **EXCELLENT**  
 Symmetry **EXCELLENT**  
 Fluorescence **SLIGHT**  
 Inscription(s) **IGI LG647492087**

**LABORATORY GROWN DIAMOND REPORT**

August 16, 2024  
 IGI Report Number **LG647492087**  
 Description **LABORATORY GROWN DIAMOND**  
 Shape and Cutting Style **CUSHION BRILLIANT**  
 Measurements **5.91 X 4.97 X 3.54 MM**



Sample Image Used

Comments: This Laboratory Grown Diamond was created by Chemical Vapor Deposition (CVD) growth process. Indications of post-growth treatment.  
 Secondary color: Orange

**GRADING RESULTS**

Carat Weight **0.86 CARAT**  
 Color Grade **FANCY VIVID PINK**  
 Clarity Grade **VVS 1**

**ADDITIONAL GRADING INFORMATION**

Polish **EXCELLENT**  
 Symmetry **EXCELLENT**  
 Fluorescence **SLIGHT**  
 Inscription(s) **IGI LG647492087**

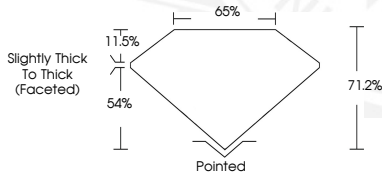
Comments: This Laboratory Grown Diamond was created by Chemical Vapor Deposition (CVD) growth process. Indications of post-growth treatment.

Secondary color: Orange



August 16, 2024  
**IGI Report Number LG647492087**  
**CUSHION BRILLIANT**  
**LABORATORY GROWN DIAMOND**  
**5.91 X 4.97 X 3.54 MM**  
 Carat Weight **0.86 CARAT**  
 Color Grade **FANCY VIVID PINK**  
 Clarity Grade **VVS 1**  
 Polish **EXCELLENT**  
 Symmetry **EXCELLENT**  
 Fluorescence **SLIGHT**  
 Inscription(s) **IGI LG647492087**

Comments: This Laboratory Grown Diamond was created by Chemical Vapor Deposition (CVD) growth process. Indications of post-growth treatment.  
 Secondary color: Orange



THIS DOCUMENT WAS PRODUCED WITH THE FOLLOWING SECURITY MEASURES: SPECIAL DOCUMENT PAPER, INK SCREENS, WATERMARK, BACKGROUND DESIGN, HOLOGRAM AND OTHER SECURITY FEATURES NOT LISTED AND DO EXCEED DOCUMENT SECURITY INDUSTRY GUIDELINES.

For terms & conditions and to verify this report, please visit [www.igi.org](http://www.igi.org)