



ELECTRONIC COPY

LG647475021
Report verification at igi.org



August 30, 2024
IGI Report Number **LG647475021**
Description **LABORATORY GROWN DIAMOND**
Shape and Cutting Style **CUSHION MODIFIED BRILLIANT**
Measurements **10.75 X 8.72 X 5.89 MM**
GRADING RESULTS
Carat Weight **5.17 CARATS**
Color Grade **FANCY VIVID PINK**
Clarity Grade **VS 2**

LABORATORY GROWN DIAMOND REPORT

August 30, 2024
IGI Report Number **LG647475021**
Description **LABORATORY GROWN DIAMOND**
Shape and Cutting Style **CUSHION MODIFIED BRILLIANT**
Measurements **10.75 X 8.72 X 5.89 MM**

GRADING RESULTS

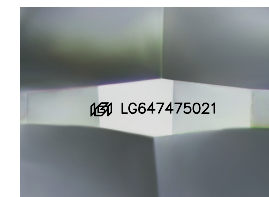
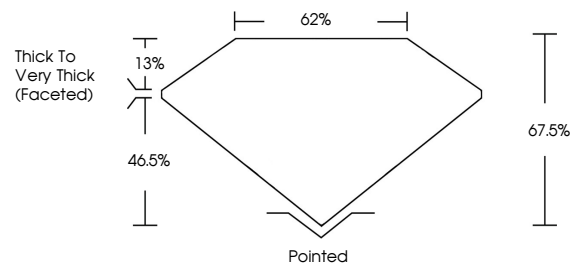
Carat Weight **5.17 CARATS**
Color Grade **FANCY VIVID PINK**
Clarity Grade **VS 2**

ADDITIONAL GRADING INFORMATION

Polish **EXCELLENT**
Symmetry **EXCELLENT**
Fluorescence **SLIGHT**
Inscription(s) **IGI LG647475021**

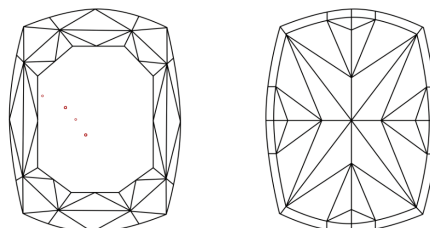
Comments: This Laboratory Grown Diamond was created by Chemical Vapor Deposition (CVD) growth process.
Indications of post-growth treatment.

PROPORTIONS



Sample Image Used

CLARITY CHARACTERISTICS



KEY TO SYMBOLS

Red symbols indicate internal characteristics.
Green symbols indicate external characteristics.

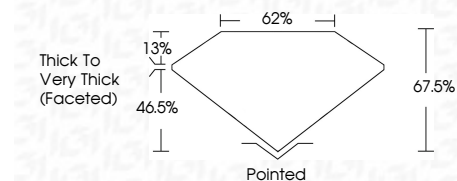
COLOR

D E F G H I J Faint Very Light Light

CLARITY

IF VS¹⁻² VS¹⁻² SI¹⁻² I¹⁻³

Internally Flawless Very Very Slightly Included Very Slightly Included Slightly Included Included



ADDITIONAL GRADING INFORMATION

Polish **EXCELLENT**
Symmetry **EXCELLENT**
Fluorescence **SLIGHT**
Inscription(s) **IGI LG647475021**
Comments: This Laboratory Grown Diamond was created by Chemical Vapor Deposition (CVD) growth process.
Indications of post-growth treatment.



August 30, 2024
IGI Report No LG647475021
CUSHION MODIFIED BRILLIANT
10.75 X 8.72 X 5.89 MM
6.17 CARATS
FANCY VIVID PINK
VS 2
5.17 CARATS
FANCY VIVID PINK
VS 2
10.75 X 8.72 X 5.89 MM
CUSHION MODIFIED BRILLIANT
EXCELLENT
EXCELLENT
SLIGHT
IGI LG647475021
Comments: This Laboratory Grown Diamond was created by Chemical Vapor Deposition (CVD) growth process.
Indications of post-growth treatment.