



ELECTRONIC COPY

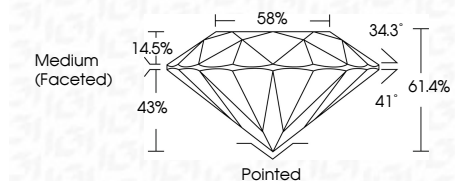
LG647449225
Report verification at igi.org



August 14, 2024
IGI Report Number LG647449225
Description LABORATORY GROWN DIAMOND
Shape and Cutting Style ROUND BRILLIANT
Measurements 7.16 - 7.20 X 4.41 MM

GRADING RESULTS

Carat Weight 1.40 CARAT
Color Grade D
Clarity Grade VVS 2
Cut Grade IDEAL

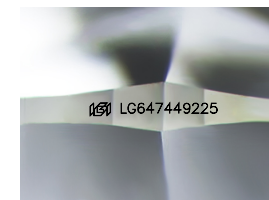


ADDITIONAL GRADING INFORMATION

Polish EXCELLENT
Symmetry EXCELLENT
Fluorescence NONE
Inscription(s) LG647449225
Comments: HEARTS & ARROWS
This Laboratory Grown Diamond was created by Chemical Vapor Deposition (CVD) growth process. Type IIa

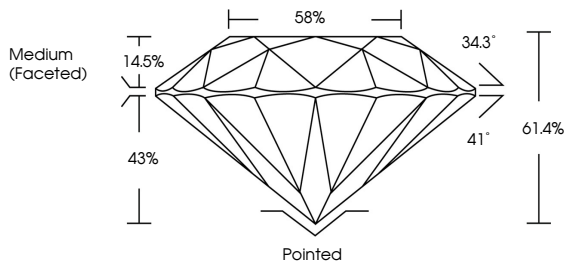


Summary table of diamond characteristics: August 14, 2024, IGI Report No LG647449225, ROUND BRILLIANT, 7.16 - 7.20 X 4.41 MM, 1.40 CARAT, D, VVS 2, IDEAL, 61.4%, 58%, Medium (Faceted), Pointed, EXCELLENT, EXCELLENT, NONE, LG647449225.

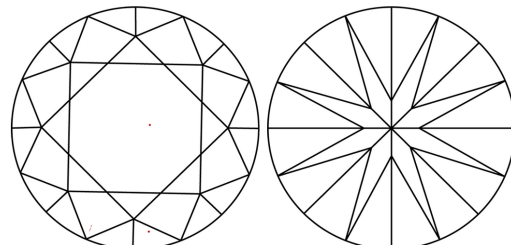


Sample Image Used

PROPORTIONS



CLARITY CHARACTERISTICS



KEY TO SYMBOLS

Red symbols indicate internal characteristics.
Green symbols indicate external characteristics.



COLOR

Color scale table with categories: D, E, F, G, H, I, J, Faint, Very Light, Light.

CLARITY

Clarity scale table with categories: IF, VVS 1-2, VS 1-2, SI 1-2, I 1-3, Internally Flawless, Very Very Slightly Included, Very Slightly Included, Slightly Included, Included.

