



# INTERNATIONAL GEMOLOGICAL INSTITUTE

## LABORATORY GROWN DIAMOND REPORT

August 12, 2024  
IGI Report Number **LG647421688**  
Description **LABORATORY GROWN DIAMOND**  
Shape and Cutting Style **ROUND BRILLIANT**  
Measurements **6.54 - 6.56 X 3.81 MM**

### GRADING RESULTS

Carat Weight **0.99 CARAT**  
Color Grade **FANCY VIVID BLUE**  
Clarity Grade **VS 2**  
Cut Grade **EXCELLENT**

### ADDITIONAL GRADING INFORMATION

Polish **EXCELLENT**  
Symmetry **EXCELLENT**  
Fluorescence **NONE**  
Inscription(s) **IGI LG647421688**

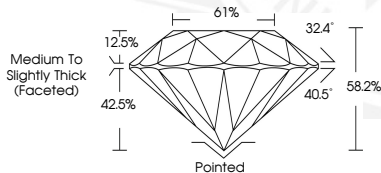
Comments: This Laboratory Grown Diamond was created by High Pressure High Temperature (HPHT) growth process. Indications of post-growth treatment.

ELECTRONIC COPY

LG647421688



Sample Image Used



August 12, 2024  
IGI Report Number **LG647421688**  
ROUND BRILLIANT  
LABORATORY GROWN DIAMOND  
6.54 - 6.56 X 3.81 MM  
Carat Weight **0.99 CARAT**  
Color Grade **FANCY VIVID BLUE**  
Clarity Grade **VS 2**  
Cut Grade **EXCELLENT**  
Polish **EXCELLENT**  
Symmetry **EXCELLENT**  
Fluorescence **NONE**  
Inscription(s) **IGI LG647421688**

Comments: This Laboratory Grown Diamond was created by High Pressure High Temperature (HPHT) growth process. Indications of post-growth treatment.



August 12, 2024  
IGI Report Number **LG647421688**  
ROUND BRILLIANT  
LABORATORY GROWN DIAMOND  
6.54 - 6.56 X 3.81 MM  
Carat Weight **0.99 CARAT**  
Color Grade **FANCY VIVID BLUE**  
Clarity Grade **VS 2**  
Cut Grade **EXCELLENT**  
Polish **EXCELLENT**  
Symmetry **EXCELLENT**  
Fluorescence **NONE**  
Inscription(s) **IGI LG647421688**

Comments: This Laboratory Grown Diamond was created by High Pressure High Temperature (HPHT) growth process. Indications of post-growth treatment.



THIS DOCUMENT WAS PRODUCED WITH THE FOLLOWING SECURITY MEASURES: SPECIAL DOCUMENT PAPER, INK SCREENS, WATERMARK, BACKGROUND DESIGNS, HOLOGRAM AND OTHER SECURITY FEATURES NOT LISTED AND DO EXCEED DOCUMENT SECURITY INDUSTRY GUIDELINES.

For terms & conditions and to verify this report, please visit [www.igi.org](http://www.igi.org)