



ELECTRONIC COPY

LG647419755
Report verification at igi.org



August 13, 2024
IGI Report Number LG647419755
Description LABORATORY GROWN DIAMOND
Shape and Cutting Style ROUND BRILLIANT
Measurements 9.34 - 9.38 X 5.65 MM
GRADING RESULTS
Carat Weight 3.05 CARATS
Color Grade FANCY INTENSE PINK
Clarity Grade VS 1
Cut Grade IDEAL

August 13, 2024
IGI Report Number LG647419755
Description LABORATORY GROWN DIAMOND
Shape and Cutting Style ROUND BRILLIANT
Measurements 9.34 - 9.38 X 5.65 MM

GRADING RESULTS

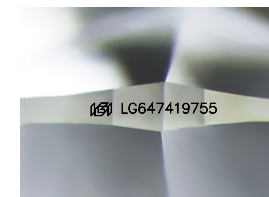
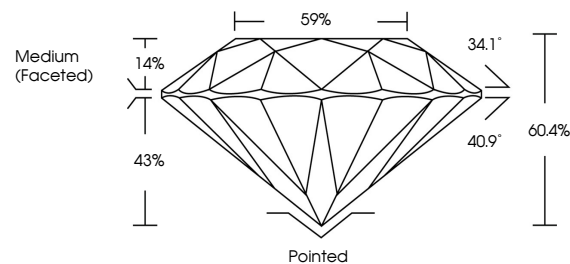
Carat Weight 3.05 CARATS
Color Grade FANCY INTENSE PINK
Clarity Grade VS 1
Cut Grade IDEAL

ADDITIONAL GRADING INFORMATION

Polish EXCELLENT
Symmetry EXCELLENT
Fluorescence SLIGHT
Inscription(s) IGI LG647419755

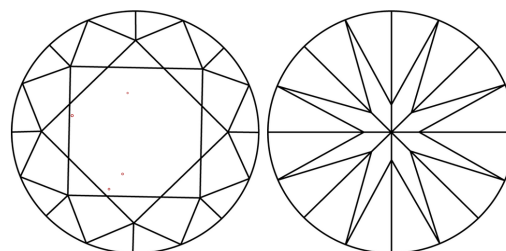
Comments: This Laboratory Grown Diamond was created by Chemical Vapor Deposition (CVD) growth process.
Indications of post-growth treatment.

PROPORTIONS



Sample Image Used

CLARITY CHARACTERISTICS



KEY TO SYMBOLS

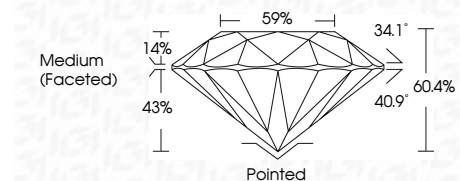
Red symbols indicate internal characteristics.
Green symbols indicate external characteristics.

COLOR

D E F G H I J Faint Very Light Light

CLARITY

Table with columns for clarity grades: IF, VS 1-2, VS 1-2, SI 1-2, I 1-3 and their descriptions: Internally Flawless, Very Very Slightly Included, Very Slightly Included, Slightly Included, Included



ADDITIONAL GRADING INFORMATION

Polish EXCELLENT
Symmetry EXCELLENT
Fluorescence SLIGHT
Inscription(s) IGI LG647419755
Comments: This Laboratory Grown Diamond was created by Chemical Vapor Deposition (CVD) growth process.
Indications of post-growth treatment.



August 13, 2024
IGI Report No LG647419755
ROUND BRILLIANT
9.34 - 9.38 X 5.65 MM
3.05 CARATS
FANCY INTENSE PINK
VS 1
IDEAL
60.4%
59%
Medium (Faceted)
Pointed
EXCELLENT
EXCELLENT
SLIGHT
IGI LG647419755
Comments: This Laboratory Grown Diamond was created by Chemical Vapor Deposition (CVD) growth process.
Indications of post-growth treatment.