



ELECTRONIC COPY

LG647410628
Report verification at igi.org



August 8, 2024

IGI Report Number **LG647410628**

Description **LABORATORY GROWN DIAMOND**

Shape and Cutting Style **CUSHION BRILLIANT**

Measurements **8.62 X 6.92 X 4.66 MM**

GRADING RESULTS

Carat Weight **2.14 CARATS**

Color Grade **D**

Clarity Grade **VVS 2**

August 8, 2024

IGI Report Number **LG647410628**

Description **LABORATORY GROWN DIAMOND**

Shape and Cutting Style **CUSHION BRILLIANT**

Measurements **8.62 X 6.92 X 4.66 MM**

GRADING RESULTS

Carat Weight **2.14 CARATS**

Color Grade **D**

Clarity Grade **VVS 2**

ADDITIONAL GRADING INFORMATION

Polish **EXCELLENT**

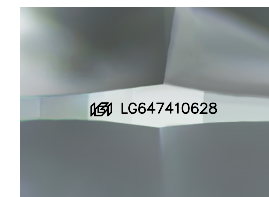
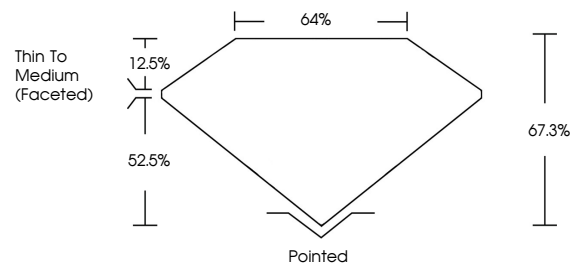
Symmetry **EXCELLENT**

Fluorescence **NONE**

Inscription(s) **LG647410628**

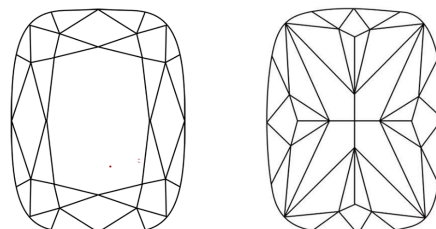
Comments: This Laboratory Grown Diamond was created by Chemical Vapor Deposition (CVD) growth process.
Type IIa

PROPORTIONS



Sample Image Used

CLARITY CHARACTERISTICS



KEY TO SYMBOLS

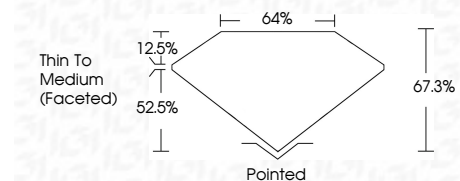
Red symbols indicate internal characteristics.
Green symbols indicate external characteristics.

COLOR

D E F G H I J Faint Very Light Light

CLARITY

IF	VS ¹⁻²	VS ¹⁻²	SI ¹⁻²	I ¹⁻³
Internally Flawless	Very Very Slightly Included	Very Slightly Included	Slightly Included	Included



ADDITIONAL GRADING INFORMATION

Polish **EXCELLENT**

Symmetry **EXCELLENT**

Fluorescence **NONE**

Inscription(s) **LG647410628**

Comments: This Laboratory Grown Diamond was created by Chemical Vapor Deposition (CVD) growth process.
Type IIa



IGI



August 8, 2024
IGI Report No LG647410628
CUSHION BRILLIANT
8.62 X 6.92 X 4.66 MM
2.14 CARATS
D
VVS 2
67.3%
64%
Thin To Medium (Faceted)
Pointed
EXCELLENT
EXCELLENT
NONE
None
IGI LG647410628
Comments: This Laboratory Grown Diamond was created by Chemical Vapor Deposition (CVD) growth process.
Type IIa