

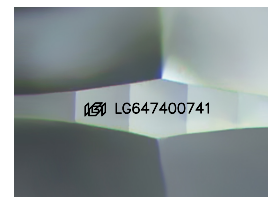
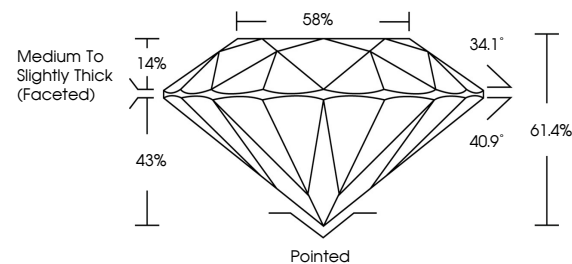


ELECTRONIC COPY

LABORATORY GROWN DIAMOND REPORT

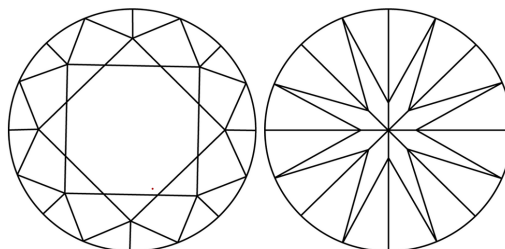
LG647400741
Report verification at igi.org

PROPORTIONS



Sample Image Used

CLARITY CHARACTERISTICS



KEY TO SYMBOLS

Red symbols indicate internal characteristics.
Green symbols indicate external characteristics.

COLOR

D E F G H I J Faint Very Light Light

CLARITY

IF	VVS ¹⁻²	VS ¹⁻²	SI ¹⁻²	I ¹⁻³
Internally Flawless	Very Very Slightly Included	Very Slightly Included	Slightly Included	Included



© IGI 2020, International Gemological Institute

FD - 10 20

www.igi.org

LABORATORY GROWN DIAMOND REPORT



August 7, 2024

IGI Report Number **LG647400741**Description **LABORATORY GROWN DIAMOND**Shape and Cutting Style **ROUND BRILLIANT**

Measurements 6.54 - 6.58 X 4.03 MM

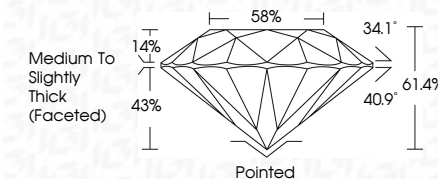
GRADING RESULTS

Carat Weight 1.08 CARAT

Color Grade E

Clarity Grade **VS 2**

Cut Grade **IDEAL**



ADDITIONAL GRADING INFORMATION

Polish **EXCELLENT**Symmetry **EXCELLENT**Fluorescence **NONE**Inscription(s)  LG647400741

Comments: This Laboratory Grown Diamond was created by Chemical Vapor Deposition (CVD) growth process.
Type IIa



August 7, 2024	G Report No. LG4740741		1.08 CARAT	W6.2	Medium to Slightly Thick (Faced)	Pointed	Excellent	NONE	1691564740741
SI GOOD BRILLIANT	Color Weight	Color Grade	Clarity Grade	Depth		Polish	Symmetry	Fluorescence	
				Table					
				Girdle					
Comments: The Laboratory Crown Diamond was CVD growth process. Type Iia									