



**ELECTRONIC COPY**

LG646454171  
Report verification at igi.org



August 13, 2024

IGI Report Number **LG646454171**

Description **LABORATORY GROWN DIAMOND**

Shape and Cutting Style **ROUND BRILLIANT**

Measurements **9.34 - 9.37 X 5.65 MM**

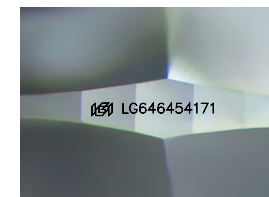
**GRADING RESULTS**

Carat Weight **3.04 CARATS**

Color Grade **FANCY INTENSE ORANGY PINK**

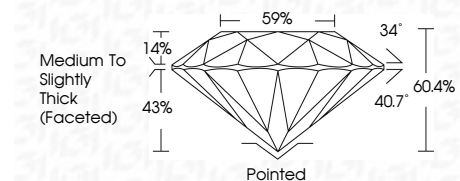
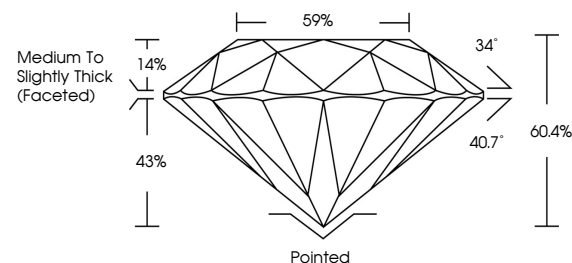
Clarity Grade **VS 2**

Cut Grade **IDEAL**

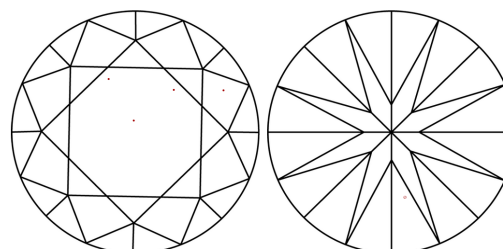


Sample Image Used

**PROPORTIONS**



**CLARITY CHARACTERISTICS**



**KEY TO SYMBOLS**

Red symbols indicate internal characteristics.  
Green symbols indicate external characteristics.

**COLOR**

D E F G H I J Faint Very Light Light

**CLARITY**

IF	VS <sup>1-2</sup>	VS <sup>1-2</sup>	SI <sup>1-2</sup>	I <sup>1-3</sup>
Internally Flawless	Very Very Slightly Included	Very Slightly Included	Slightly Included	Included

**ADDITIONAL GRADING INFORMATION**

Polish **EXCELLENT**

Symmetry **EXCELLENT**

Fluorescence **SLIGHT**

Inscription(s) **IGI LG646454171**

Comments: This Laboratory Grown Diamond was created by Chemical Vapor Deposition (CVD) growth process. Indications of post-growth treatment.



August 13, 2024  
IGI Report No LG646454171  
ROUND BRILLIANT

3.04 CARATS  
Carat Weight  
FANCY INTENSE ORANGY PINK  
Color Grade  
VS 2  
Clarity Grade  
IDEAL  
60.4%  
59%  
Medium To Slightly Thick (Faceted)

Pointed  
EXCELLENT  
EXCELLENT  
SLIGHT  
IGI LG646454171

Cut  
Polish  
Symmetry  
Fluorescence  
Inscriptions(s)

Comments: This Laboratory Grown Diamond was created by Chemical Vapor Deposition (CVD) growth process. Indications of post-growth treatment.

