



ELECTRONIC COPY

LG646453869 Report verification at igi.org



August 7, 2024
IGI Report Number LG646453869
Description LABORATORY GROWN DIAMOND
Shape and Cutting Style CUT CORNERED RECTANGULAR MIXED CUT
Measurements 16.71 X 9.58 X 5.75 MM
GRADING RESULTS
Carat Weight 10.03 CARATS
Color Grade FANCY INTENSE PINK
Clarity Grade VS 2

LABORATORY GROWN DIAMOND REPORT

August 7, 2024
IGI Report Number LG646453869
Description LABORATORY GROWN DIAMOND
Shape and Cutting Style CUT CORNERED RECTANGULAR MIXED CUT
Measurements 16.71 X 9.58 X 5.75 MM

GRADING RESULTS

Carat Weight 10.03 CARATS
Color Grade FANCY INTENSE PINK
Clarity Grade VS 2

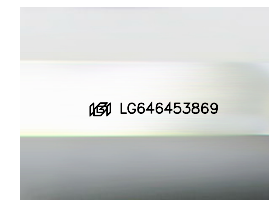
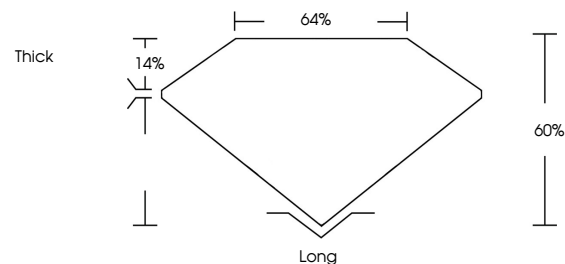
ADDITIONAL GRADING INFORMATION

Polish EXCELLENT
Symmetry EXCELLENT
Fluorescence SLIGHT
Inscription(s) LG646453869

Comments: This Laboratory Grown Diamond was created by Chemical Vapor Deposition (CVD) growth process.
Indications of post-growth treatment.

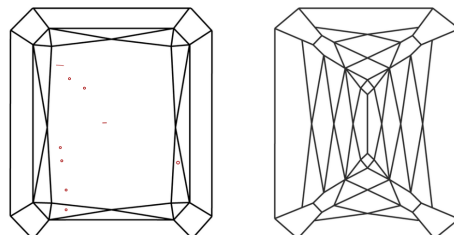
Secondary color: Brown

PROPORTIONS



Sample Image Used

CLARITY CHARACTERISTICS



KEY TO SYMBOLS

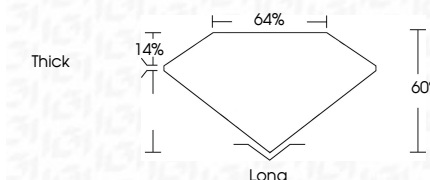
Red symbols indicate internal characteristics.
Green symbols indicate external characteristics.

COLOR

D E F G H I J Faint Very Light Light

CLARITY

IF VS 1-2 VS 1-2 SI 1-2 I 1-3
Internally Flawless Very Very Slightly Included Very Slightly Included Slightly Included Included



ADDITIONAL GRADING INFORMATION

Polish EXCELLENT
Symmetry EXCELLENT
Fluorescence SLIGHT
Inscription(s) LG646453869
Comments: This Laboratory Grown Diamond was created by Chemical Vapor Deposition (CVD) growth process.
Indications of post-growth treatment.
Secondary color: Brown



August 7, 2024
IGI Report No LG646453869
CUT CORNERED RECT. MIXED CUT
10.03 CARATS
FANCY INTENSE PINK
VS 2
60%
64%
14%
10.03 CARATS
FANCY INTENSE PINK
VS 2
EXCELLENT
EXCELLENT
SLIGHT
LG646453869
Comments: This Laboratory Grown Diamond was created by Chemical Vapor Deposition (CVD) growth process.
Indications of post-growth treatment.
Secondary color: Brown