



**ELECTRONIC COPY**

LG645493535  
Report verification at igi.org



August 7, 2024  
IGI Report Number **LG645493535**  
Description **LABORATORY GROWN DIAMOND**  
Shape and Cutting Style **EMERALD CUT**  
Measurements **8.10 X 5.89 X 3.71 MM**  
**GRADING RESULTS**  
Carat Weight **1.75 CARAT**  
Color Grade **FANCY INTENSE PINK**  
Clarity Grade **VS 2**

August 7, 2024  
IGI Report Number **LG645493535**  
Description **LABORATORY GROWN DIAMOND**  
Shape and Cutting Style **EMERALD CUT**  
Measurements **8.10 X 5.89 X 3.71 MM**

**GRADING RESULTS**

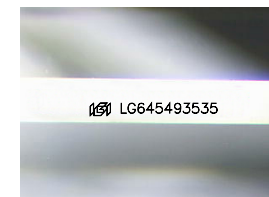
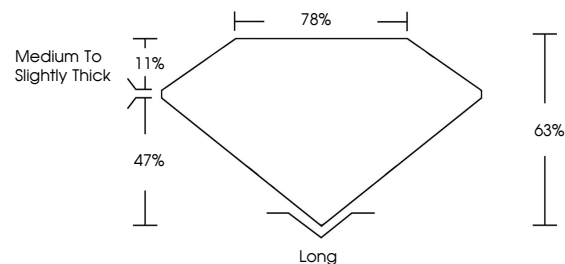
Carat Weight **1.75 CARAT**  
Color Grade **FANCY INTENSE PINK**  
Clarity Grade **VS 2**

**ADDITIONAL GRADING INFORMATION**

Polish **EXCELLENT**  
Symmetry **EXCELLENT**  
Fluorescence **SLIGHT**  
Inscription(s) **LG645493535**

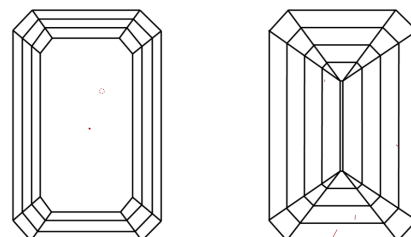
Comments: This Laboratory Grown Diamond was created by Chemical Vapor Deposition (CVD) growth process.  
Indications of post-growth treatment.

**PROPORTIONS**



Sample Image Used

**CLARITY CHARACTERISTICS**



**KEY TO SYMBOLS**

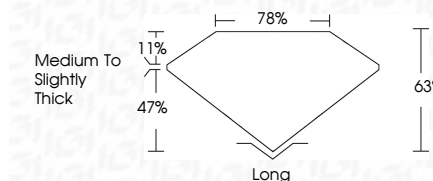
Red symbols indicate internal characteristics.  
Green symbols indicate external characteristics.

**COLOR**

D E F G H I J Faint Very Light Light

**CLARITY**

IF	VS <sup>1-2</sup>	VS <sup>1-2</sup>	SI <sup>1-2</sup>	I <sup>1-3</sup>
Internally Flawless	Very Very Slightly Included	Very Slightly Included	Slightly Included	Included



**ADDITIONAL GRADING INFORMATION**

Polish **EXCELLENT**  
Symmetry **EXCELLENT**  
Fluorescence **SLIGHT**  
Inscription(s) **LG645493535**  
Comments: This Laboratory Grown Diamond was created by Chemical Vapor Deposition (CVD) growth process.  
Indications of post-growth treatment.



**IGI**

August 7, 2024  
IGI Report No **LG645493535**  
**EMERALD CUT**  
**8.10 X 5.89 X 3.71 MM**  
Carat Weight **1.75 CARAT**  
Color Grade **FANCY INTENSE PINK**  
Clarity Grade **VS 2**  
Depth **63%**  
Table **78%**  
Girdle **Medium to Slightly Thick**  
Culet **Long**  
Polish **EXCELLENT**  
Symmetry **EXCELLENT**  
Fluorescence **SLIGHT**  
Inscription(s) **LG645493535**

Comments: This Laboratory Grown Diamond was created by Chemical Vapor Deposition (CVD) growth process.  
Indications of post-growth treatment.