



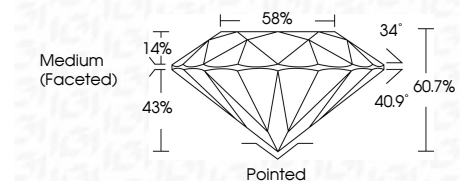
ELECTRONIC COPY

LG645472419 Report verification at igi.org



July 27, 2024 IGI Report Number LG645472419 Description LABORATORY GROWN DIAMOND Shape and Cutting Style ROUND BRILLIANT Measurements 7.79 - 7.81 X 4.74 MM

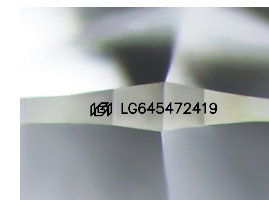
GRADING RESULTS Carat Weight 1.77 CARAT Color Grade E Clarity Grade VVS 1 Cut Grade IDEAL



ADDITIONAL GRADING INFORMATION Polish EXCELLENT Symmetry EXCELLENT Fluorescence NONE Inscription(s) LG645472419 Comments: HEARTS & ARROWS This Laboratory Grown Diamond was created by Chemical Vapor Deposition (CVD) growth process. Type IIa

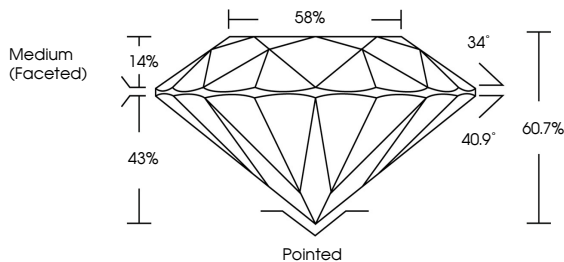


July 27, 2024 IGI Report No LG645472419 ROUND BRILLIANT 7.79 - 7.81 X 4.74 MM 1.77 CARAT E VVS 1 IDEAL 60.7% 58% Medium (Faceted) Pointed EXCELLENT EXCELLENT NONE NONE LG645472419 Comments: HEARTS & ARROWS This Laboratory Grown Diamond was created by Chemical Vapor Deposition (CVD) growth process. Type IIa

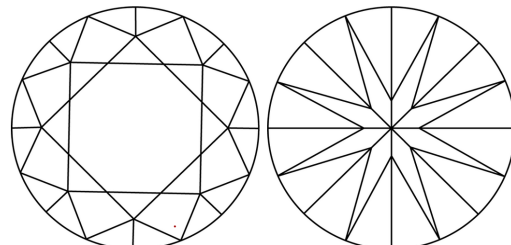


Sample Image Used

PROPORTIONS



CLARITY CHARACTERISTICS



KEY TO SYMBOLS

Red symbols indicate internal characteristics. Green symbols indicate external characteristics.



COLOR

D E F G H I J Faint Very Light Light

CLARITY

IF VVS 1-2 VS 1-2 SI 1-2 I 1-3 Internally Flawless Very Very Slightly Included Very Slightly Included Slightly Included Included

