



ELECTRONIC COPY

LG645458170
Report verification at igi.org



August 1, 2024
IGI Report Number **LG645458170**
Description **LABORATORY GROWN DIAMOND**
Shape and Cutting Style **SQUARE CUSHION MODIFIED BRILLIANT**
Measurements **8.53 X 8.24 X 5.42 MM**
GRADING RESULTS
Carat Weight **3.71 CARATS**
Color Grade **FANCY VIVID BROWNISH PINK**
Clarity Grade **VS 2**

August 1, 2024
IGI Report Number **LG645458170**
Description **LABORATORY GROWN DIAMOND**
Shape and Cutting Style **SQUARE CUSHION MODIFIED BRILLIANT**
Measurements **8.53 X 8.24 X 5.42 MM**

GRADING RESULTS

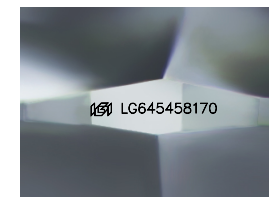
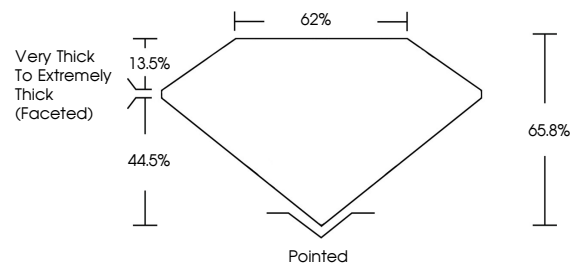
Carat Weight **3.71 CARATS**
Color Grade **FANCY VIVID BROWNISH PINK**
Clarity Grade **VS 2**

ADDITIONAL GRADING INFORMATION

Polish **EXCELLENT**
Symmetry **EXCELLENT**
Fluorescence **SLIGHT**
Inscription(s) **IGI LG645458170**

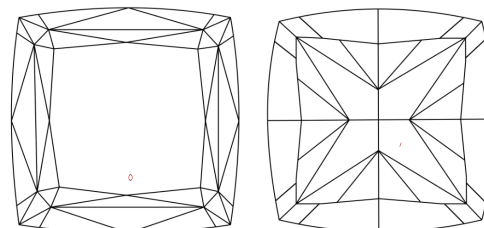
Comments: This Laboratory Grown Diamond was created by Chemical Vapor Deposition (CVD) growth process.
Indications of post-growth treatment.

PROPORTIONS



Sample Image Used

CLARITY CHARACTERISTICS



KEY TO SYMBOLS

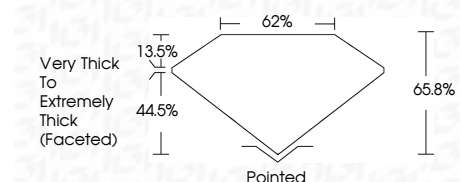
Red symbols indicate internal characteristics.
Green symbols indicate external characteristics.

COLOR

D E F G H I J Faint Very Light Light

CLARITY

IF	VS ¹⁻²	VS ¹⁻²	SI ¹⁻²	I ¹⁻³
Internally Flawless	Very Very Slightly Included	Very Slightly Included	Slightly Included	Included



ADDITIONAL GRADING INFORMATION

Polish **EXCELLENT**
Symmetry **EXCELLENT**
Fluorescence **SLIGHT**
Inscription(s) **IGI LG645458170**
Comments: This Laboratory Grown Diamond was created by Chemical Vapor Deposition (CVD) growth process.
Indications of post-growth treatment.



August 1, 2024
IGI Report No **LG645458170**
SQUARE CUSHION MODIFIED BRILLIANT
8.53 X 8.24 X 5.42 MM
Carat Weight **3.71 CARATS**
Color Grade **FANCY VIVID BROWNISH PINK**
Clarity Grade **VS 2**
Depth **65.8%**
Table **62%**
Girdle **Very Thick to Extremely Thick (Faceted)**
Culet **Pointed**
Polish **EXCELLENT**
Symmetry **EXCELLENT**
Fluorescence **SLIGHT**
Inscription(s) **IGI LG645458170**

Comments: This Laboratory Grown Diamond was created by Chemical Vapor Deposition (CVD) growth process.
Indications of post-growth treatment.