

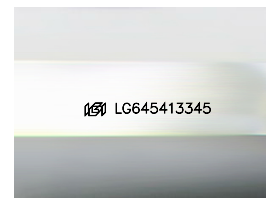
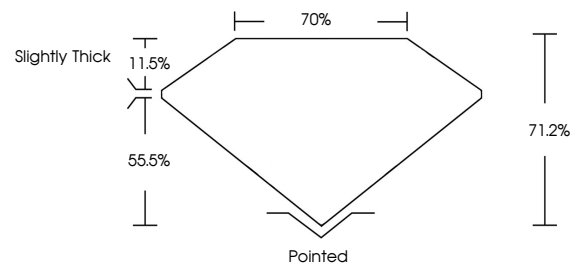


ELECTRONIC COPY

LABORATORY GROWN DIAMOND REPORT

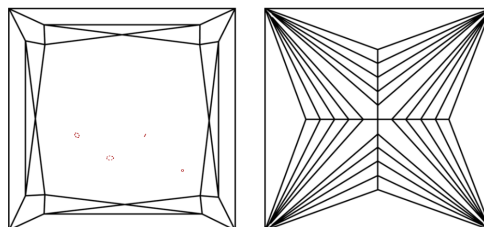
LG645413345
Report verification at igi.org

PROPORTIONS



Sample Image Used

CLARITY CHARACTERISTICS



KEY TO SYMBOLS

Red symbols indicate internal characteristics.
Green symbols indicate external characteristics.

COLOR

D E F G H I J Faint Very Light Light

CLARITY

| IF | VVS ¹⁻² | VS ¹⁻² | SI ¹⁻² | I ¹⁻³ |
|---------------------|-----------------------------|------------------------|-------------------|------------------|
| Internally Flawless | Very Very Slightly Included | Very Slightly Included | Slightly Included | Included |



© IGI 2020, International Gemological Institute

FD - 10 20

www.igi.org

LABORATORY GROWN DIAMOND REPORT



August 3, 2024

IGI Report Number **LG645413345**Description **LABORATORY GROWN DIAMOND**Shape and Cutting Style **PRINCESS CUT**

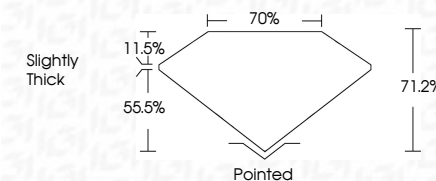
Measurements 7.58 X 7.42 X 5.28 MM

GRADING RESULTS

Carat Weight **2.69 CARATS**

Color Grade **G**

Clarity Grade VS 1



ADDITIONAL GRADING INFORMATION

Polish **EXCELLENT**Symmetry **EXCELLENT**Fluorescence **NONE**Inscription(s) LG645413345

Comments: This Laboratory Grown Diamond was created by Chemical Vapor Deposition (CVD) growth process.
Type IIa



August 3, 2024
 IGI Report No LG645413345
 PRINCESS CLIT

| | | |
|----------------|------|-----------------------|
| 2.69 CARATS | VS 1 | Pointed |
| 71.2% | 70% | EXCELLENT |
| Slightly Thick | | EXCELLENT |
| | | NONE |
| | | Fluorescence |
| | | Symmetry |
| | | Polish |
| | | Culet |
| | | Grade |
| | | Table |
| | | Depth |
| | | Clarity Grade |
| | | Color Grade |
| | | Carat Weight |
| | | 5.59 X 7.42 X 5.28 MM |

Comments:
This Laboratory Grown Diamond was
created by Chemical Vapor Deposition
(CVD) growth process.