



ELECTRONIC COPY

LG645407510
Report verification at igi.org



August 7, 2024
IGI Report Number LG645407510
Description LABORATORY GROWN DIAMOND
Shape and Cutting Style SQUARE EMERALD CUT
Measurements 5.79 X 5.79 X 3.86 MM
GRADING RESULTS
Carat Weight 1.19 CARAT
Color Grade FANCY VIVID YELLOW
Clarity Grade VS 2

LABORATORY GROWN DIAMOND REPORT

August 7, 2024
IGI Report Number LG645407510
Description LABORATORY GROWN DIAMOND
Shape and Cutting Style SQUARE EMERALD CUT
Measurements 5.79 X 5.79 X 3.86 MM

GRADING RESULTS

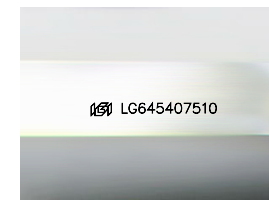
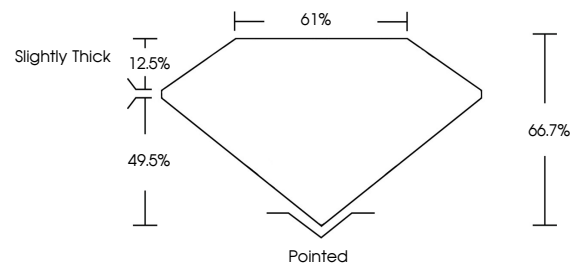
Carat Weight 1.19 CARAT
Color Grade FANCY VIVID YELLOW
Clarity Grade VS 2

ADDITIONAL GRADING INFORMATION

Polish EXCELLENT
Symmetry EXCELLENT
Fluorescence NONE
Inscription(s) IGI LG645407510

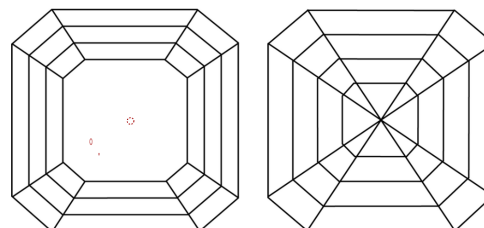
Comments: As Grown - No indication of post-growth treatment.
This Laboratory Grown Diamond was created by High Pressure High Temperature (HPHT) growth process.

PROPORTIONS



Sample Image Used

CLARITY CHARACTERISTICS



KEY TO SYMBOLS

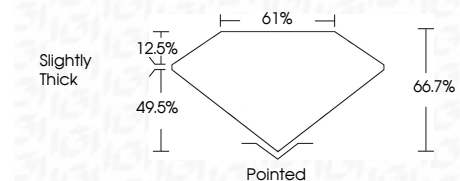
Red symbols indicate internal characteristics.
Green symbols indicate external characteristics.

COLOR

D E F G H I J Faint Very Light Light

CLARITY

Table with 5 columns: IF, VS 1-2, VS 1-2, SI 1-2, I 1-3. Rows: Internally Flawless, Very Very Slightly Included, Very Slightly Included, Slightly Included, Included.



ADDITIONAL GRADING INFORMATION

Polish EXCELLENT
Symmetry EXCELLENT
Fluorescence NONE
Inscription(s) IGI LG645407510
Comments: As Grown - No indication of post-growth treatment.
This Laboratory Grown Diamond was created by High Pressure High Temperature (HPHT) growth process.



August 7, 2024
IGI Report No LG645407510
SQUARE EMERALD CUT
1.19 CARAT
Color Grade FANCY VIVID YELLOW
Clarity Grade VS 2
Depth 66.7%
Table 61%
Girdle Slightly Thick
Culet Pointed
Polish EXCELLENT
Symmetry EXCELLENT
Fluorescence NONE
Inscription(s) IGI LG645407510
Comments: As Grown - No indication of post-growth treatment.
This Laboratory Grown Diamond was created by High Pressure High Temperature (HPHT) growth process.