



**INTERNATIONAL  
GEMOLOGICAL  
INSTITUTE**

**ELECTRONIC COPY**

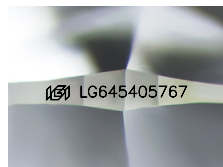
**LG645405767**



August 7, 2024  
**IGI Report Number** LG645405767  
**ROUND BRILLIANT**  
**LABORATORY GROWN DIAMOND**  
**5.47 - 5.49 X 3.28 MM**  
**Carat Weight** 0.61 CARAT  
**Color Grade** FANCY INTENSE GREEN  
**Clarity Grade** VS 1  
**Cut Grade** IDEAL  
**Polish** EXCELLENT  
**Symmetry** EXCELLENT  
**Fluorescence** NONE  
**Inscription(s)** IGI LG645405767

**LABORATORY GROWN DIAMOND REPORT**

August 7, 2024  
**IGI Report Number** LG645405767  
**Description** LABORATORY GROWN DIAMOND  
**Shape and Cutting Style** ROUND BRILLIANT  
**Measurements** 5.47 - 5.49 X 3.28 MM



Sample Image Used

**Comments:** This Laboratory Grown Diamond was created by Chemical Vapor Deposition (CVD) growth process. Indications of post-growth treatment.  
**Secondary color:** Grey

**GRADING RESULTS**

**Carat Weight** 0.61 CARAT  
**Color Grade** FANCY INTENSE GREEN  
**Clarity Grade** VS 1  
**Cut Grade** IDEAL

**ADDITIONAL GRADING INFORMATION**

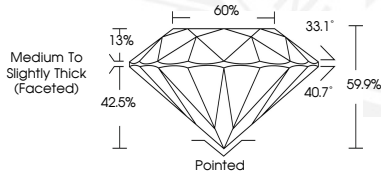
**Polish** EXCELLENT  
**Symmetry** EXCELLENT  
**Fluorescence** NONE  
**Inscription(s)** IGI LG645405767

**Comments:** This Laboratory Grown Diamond was created by Chemical Vapor Deposition (CVD) growth process. Indications of post-growth treatment.

**Secondary color:** Grey



August 7, 2024  
**IGI Report Number** LG645405767  
**ROUND BRILLIANT**  
**LABORATORY GROWN DIAMOND**  
**5.47 - 5.49 X 3.28 MM**  
**Carat Weight** 0.61 CARAT  
**Color Grade** FANCY INTENSE GREEN  
**Clarity Grade** VS 1  
**Cut Grade** IDEAL  
**Polish** EXCELLENT  
**Symmetry** EXCELLENT  
**Fluorescence** NONE  
**Inscription(s)** IGI LG645405767



THIS DOCUMENT WAS PRODUCED WITH THE FOLLOWING SECURITY MEASURES: SPECIAL DOCUMENT PAPER, INK SCREENS, WATERMARK, BACKGROUND DESIGNS, HOLOGRAM AND OTHER SECURITY FEATURES NOT LISTED AND DO EXCEED DOCUMENT SECURITY INDUSTRY GUIDELINES.

For terms & conditions and to verify this report, please visit [www.igi.org](http://www.igi.org)