

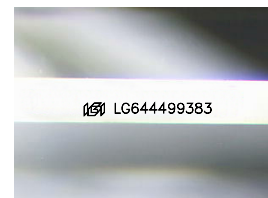
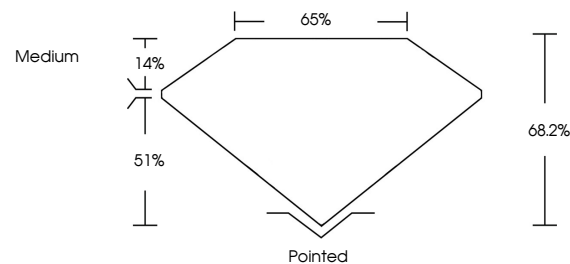


**ELECTRONIC COPY**

## LABORATORY GROWN DIAMOND REPORT

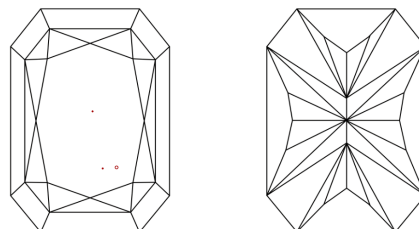
LG644499383  
Report verification at [igi.org](https://www.igi.org)

## PROPORTIONS



Sample Image Used

## CLARITY CHARACTERISTICS



### KEY TO SYMBOLS

Red symbols indicate internal characteristics.  
Green symbols indicate external characteristics.

## COLOR

D E F G H I J Faint Very Light Light

## CLARITY

IF	VVS <sup>1-2</sup>	VS <sup>1-2</sup>	SI <sup>1-2</sup>	I <sup>1-3</sup>
Internally Flawless	Very Very Slightly Included	Very Slightly Included	Slightly Included	Included



© IGI 2020, International Gemological Institute

FD - 10 20

**www.igi.org**

## LABORATORY GROWN DIAMOND REPORT



July 23, 2024

IGI Report Number **LG644499383**Description **LABORATORY GROWN DIAMOND**

Shape and Cutting Style

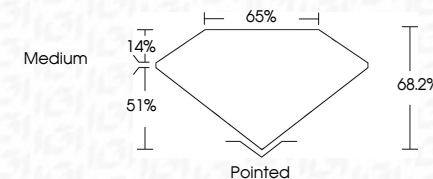
Measurements 9.19 X 6.20 X 4.23 MM

## GRADING RESULTS

Carat Weight **2.07 CARATS**

Color Grade D

Clarity Grade VS 1



### ADDITIONAL GRADING INFORMATION

Polish **EXCELLENT**Symmetry **EXCELLENT**Fluorescence **NONE**Inscription(s)  LG644499383

Comments: This Laboratory Grown Diamond was created by Chemical Vapor Deposition (CVD) growth process.  
Type IIa



IG

July 23, 2024	GI Report No LG54449383	
CUT CORNERED RECT. MODIFIED BRILLIANT		
207 CARATS	D	
	Vs1	
	68.2%	
	65%	
	Medium	
	Polished	
	EXCELLENT	
	EXCELLENT	
	NONE	
	659 LG54449383	

Comments:  
 This Laboratory Grown Diamond was  
 created by Chemical Vapor Deposition  
 (CVD) growth process.  
 Type IIa