



ELECTRONIC COPY

LG644494550
Report verification at igi.org



July 22, 2024

IGI Report Number **LG644494550**

Description **LABORATORY GROWN DIAMOND**

Shape and Cutting Style **EMERALD CUT**

Measurements **16.77 X 10.52 X 6.41 MM**

GRADING RESULTS

Carat Weight **12.04 CARATS**

Color Grade **FANCY INTENSE PINK**

Clarity Grade **VS 2**

LABORATORY GROWN DIAMOND REPORT

July 22, 2024

IGI Report Number **LG644494550**

Description **LABORATORY GROWN DIAMOND**

Shape and Cutting Style **EMERALD CUT**

Measurements **16.77 X 10.52 X 6.41 MM**

GRADING RESULTS

Carat Weight **12.04 CARATS**

Color Grade **FANCY INTENSE PINK**

Clarity Grade **VS 2**

ADDITIONAL GRADING INFORMATION

Polish **VERY GOOD**

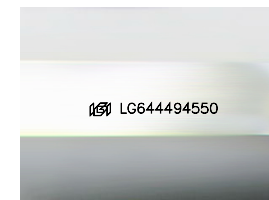
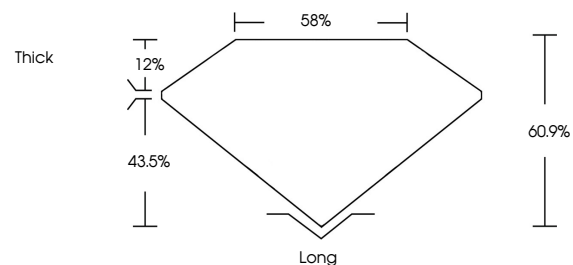
Symmetry **EXCELLENT**

Fluorescence **SLIGHT**

Inscription(s) **LG644494550**

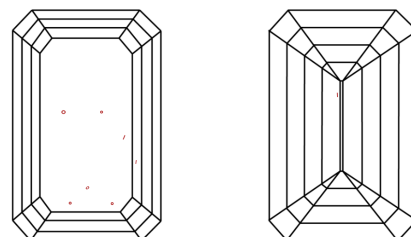
Comments: This Laboratory Grown Diamond was created by Chemical Vapor Deposition (CVD) growth process. Indications of post-growth treatment.

PROPORTIONS



Sample Image Used

CLARITY CHARACTERISTICS



KEY TO SYMBOLS

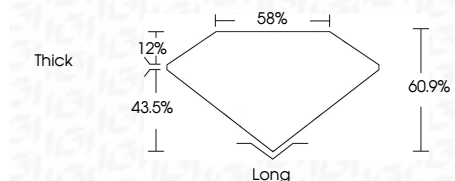
Red symbols indicate internal characteristics.
Green symbols indicate external characteristics.

COLOR

D E F G H I J Faint Very Light Light

CLARITY

IF	VS ¹⁻²	VS ¹⁻²	SI ¹⁻²	I ¹⁻³
Internally Flawless	Very Very Slightly Included	Very Slightly Included	Slightly Included	Included



ADDITIONAL GRADING INFORMATION

Polish **VERY GOOD**

Symmetry **EXCELLENT**

Fluorescence **SLIGHT**

Inscription(s) **LG644494550**

Comments: This Laboratory Grown Diamond was created by Chemical Vapor Deposition (CVD) growth process. Indications of post-growth treatment.



July 22, 2024
IGI Report No **LG644494550**
EMERALD CUT

12.04 CARATS
Carat Weight
FANCY INTENSE PINK
Color Grade
VS 2
Clarity Grade
60.9%
Depth
58%
Table
Thick
Girdle

Long
Culet
VERY GOOD
Polish
EXCELLENT
Symmetry
SLIGHT
Fluorescence
IGI LG644494550
Inscription(s)

Comments: This Laboratory Grown Diamond was created by Chemical Vapor Deposition (CVD) growth process. Indications of post-growth treatment.