



ELECTRONIC COPY

LG644457750
Report verification at igi.org



July 17, 2024

IGI Report Number **LG644457750**

Description **LABORATORY GROWN DIAMOND**

Shape and Cutting Style **EMERALD CUT**

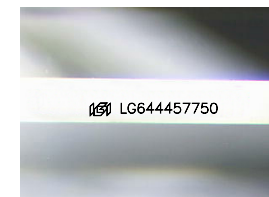
Measurements **8.56 X 6.29 X 4.12 MM**

GRADING RESULTS

Carat Weight **2.12 CARATS**

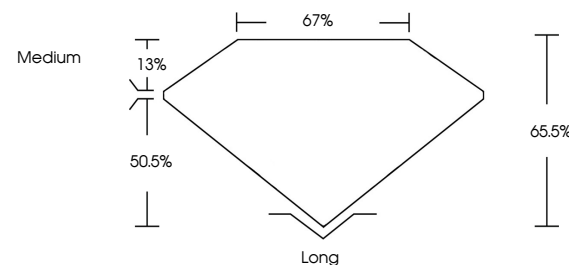
Color Grade **H**

Clarity Grade **VS 1**

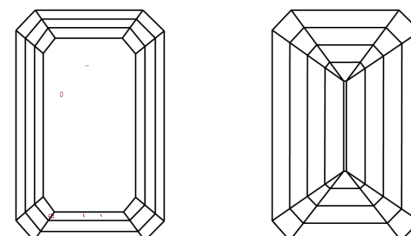


Sample Image Used

PROPORTIONS



CLARITY CHARACTERISTICS



KEY TO SYMBOLS

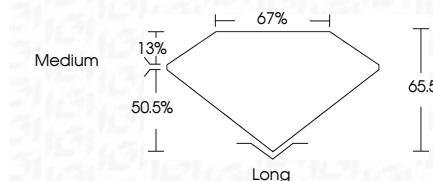
Red symbols indicate internal characteristics.
Green symbols indicate external characteristics.

COLOR

D E F G H I J Faint Very Light Light

CLARITY

IF	VS ¹⁻²	VS ¹⁻²	SI ¹⁻²	I ¹⁻³
Internally Flawless	Very Very Slightly Included	Very Slightly Included	Slightly Included	Included



ADDITIONAL GRADING INFORMATION

Polish **EXCELLENT**

Symmetry **EXCELLENT**

Fluorescence **NONE**

Inscription(s) **IGI LG644457750**

Comments: This Laboratory Grown Diamond was created by Chemical Vapor Deposition (CVD) growth process.
Type IIa



IGI



July 17, 2024
IGI Report No LG644457750
EMERALD CUT

8.56 X 6.29 X 4.12 MM

Carat Weight **2.12 CARATS**

Color Grade **H**

Clarity Grade **VS 1**

Depth **65.5%**

Table **67%**

Girdle **Medium**

Culet **Long**

Polish **EXCELLENT**

Symmetry **EXCELLENT**

Fluorescence **NONE**

Inscription(s) **IGI LG644457750**

Comments: This Laboratory Grown Diamond was created by Chemical Vapor Deposition (CVD) growth process.
Type IIa