



ELECTRONIC COPY

LG64444447
Report verification at igi.org



August 5, 2024
IGI Report Number **LG64444447**
Description **LABORATORY GROWN DIAMOND**
Shape and Cutting Style **CUT CORNERED
RECTANGULAR MODIFIED
BRILLIANT**
Measurements **12.26 X 8.52 X 5.54 MM**
GRADING RESULTS
Carat Weight **5.04 CARATS**
Color Grade **FANCY VIVID YELLOW**
Clarity Grade **VS 1**

August 5, 2024
IGI Report Number **LG64444447**
Description **LABORATORY GROWN DIAMOND**
Shape and Cutting Style **CUT CORNERED RECTANGULAR
MODIFIED BRILLIANT**
Measurements **12.26 X 8.52 X 5.54 MM**

GRADING RESULTS

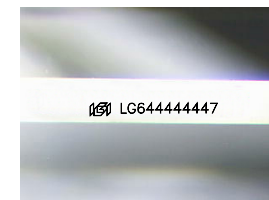
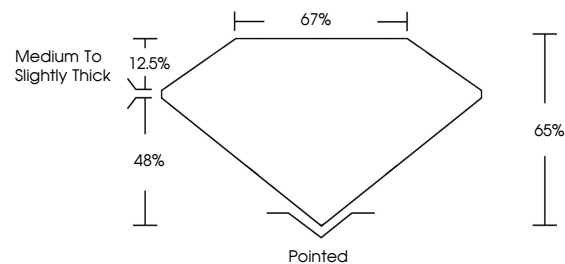
Carat Weight **5.04 CARATS**
Color Grade **FANCY VIVID YELLOW**
Clarity Grade **VS 1**

ADDITIONAL GRADING INFORMATION

Polish **EXCELLENT**
Symmetry **EXCELLENT**
Fluorescence **NONE**
Inscription(s) **IGI LG64444447**

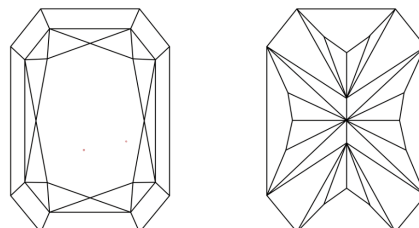
Comments: This Laboratory Grown Diamond was created by Chemical Vapor Deposition (CVD) growth process.

PROPORTIONS



Sample Image Used

CLARITY CHARACTERISTICS



KEY TO SYMBOLS

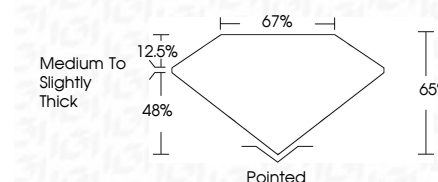
Red symbols indicate internal characteristics.
Green symbols indicate external characteristics.

COLOR

D E F G H I J Faint Very Light Light

CLARITY

IF	VS ¹⁻²	VS ¹⁻²	SI ¹⁻²	I ¹⁻³
Internally Flawless	Very Very Slightly Included	Very Slightly Included	Slightly Included	Included



ADDITIONAL GRADING INFORMATION

Polish **EXCELLENT**
Symmetry **EXCELLENT**
Fluorescence **NONE**
Inscription(s) **IGI LG64444447**
Comments: This Laboratory Grown Diamond was created by Chemical Vapor Deposition (CVD) growth process.



August 5, 2024
IGI Report No **LG64444447**
CUT CORNERED RECT. MODIFIED BRILLIANT
12.26 X 8.52 X 5.54 MM
Carat Weight **5.04 CARATS**
Color Grade **FANCY VIVID YELLOW**
Clarity Grade **VS 1**
Depth **48%**
Table **12.5%**
Girdle **Medium to Slightly Thick**
Culet **Pointed**
Polish **EXCELLENT**
Symmetry **EXCELLENT**
Fluorescence **NONE**
Inscription(s) **IGI LG64444447**
Comments: This Laboratory Grown Diamond was created by Chemical Vapor Deposition (CVD) growth process.