



ELECTRONIC COPY

LABORATORY GROWN DIAMOND REPORT

July 31, 2024	
IGI Report Number	LG644444139
Description	LABORATORY GROWN DIAMOND
Shape and Cutting Style	ROUND BRILLIANT
Measurements	8.95 - 8.99 X 5.47 MM

GRADING RESULTS

Carat Weight	2.71 CARATS
Color Grade	FANCY INTENSE PINK
Clarity Grade	VS 2
Cut Grade	IDEAL

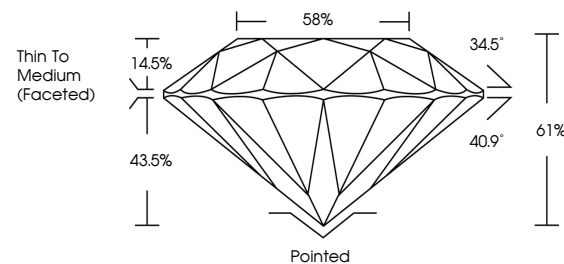
ADDITIONAL GRADING INFORMATION

Polish	EXCELLENT
Symmetry	EXCELLENT
Fluorescence	SLIGHT
Inscription(s)	LG644444139

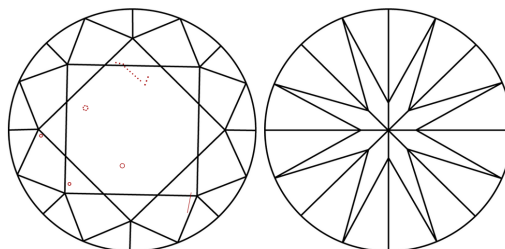
Comments: This Laboratory Grown Diamond was created by Chemical Vapor Deposition (CVD) growth process.
Indications of post-growth treatment.

LG644444139
Report verification at igi.org

PROPORTIONS

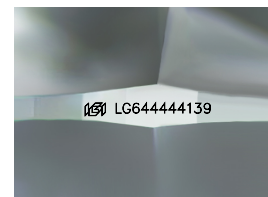


CLARITY CHARACTERISTICS



KEY TO SYMBOLS

Red symbols indicate internal characteristics.
Green symbols indicate external characteristics.



Sample Image Used

COLOR

D E F G H I J Faint Very Light Light

CLARITY

IF	VVS ^{1,2}	VS ^{1,2}	SI ^{1,2}	I ^{1,3}
Internally Flawless	Very Very Slightly Included	Very Slightly Included	Slightly Included	Included



© IGI 2020, International Gemological Institute

FD - 10 20

www.igi.org

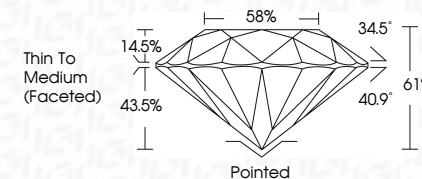
LABORATORY GROWN DIAMOND REPORT



July 31, 2024	
IGI Report Number	LG644444139
Description	LABORATORY GROWN DIAMOND
Shape and Cutting Style	ROUND BRILLIANT
Measurements	8.95 - 8.99 X 5.47 MM

GRADING RESULTS

Carat Weight	2.71 CARATS
Color Grade	FANCY INTENSE PINK
Clarity Grade	VS 2
Cut Grade	IDEAL



ADDITIONAL GRADING INFORMATION

Polish	EXCELLENT
Symmetry	EXCELLENT
Fluorescence	SLIGHT
Inscription(s)	 LG644444139

Comments: This Laboratory Grown Diamond was created by Chemical Vapor Deposition (CVD) growth process.
Indications of post-growth treatment.



July 31, 2024
GI Report No LG644444139
ROUND BRILLIANT

95 - 9.95 X 5.47 MM	2.71 CARATS	
Carat Weight	FANCY INTENSE PINK	
Color Grade	VS 2	
Clarity Grade	IDEAL	
Cut Grade	61%	
Depth	58%	
Table	Thin To Medium	
Girdle	(face-to-face)	
Culet	Pointed	
Polish	EXCELLENT	
Symmetry	EXCELLENT	
Fluorescence	SLIGHT	

Comments:
This Laboratory Grown Diamond was created by Chemical Vapor Deposition (CVD) growth process.