



ELECTRONIC COPY

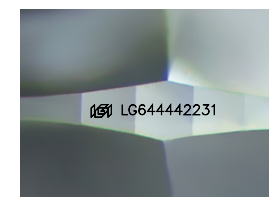
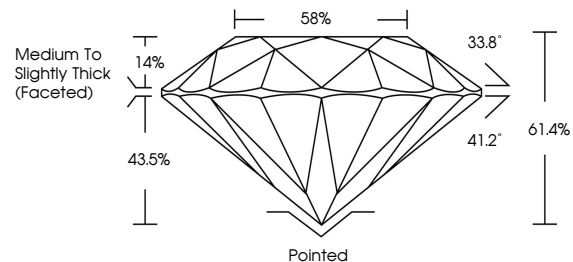
LG644442231 Report verification at igi.org



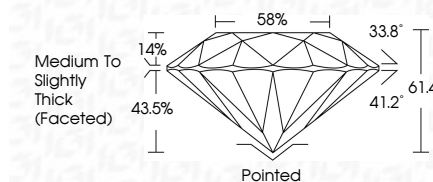
August 5, 2024
IGI Report Number LG644442231
Description LABORATORY GROWN DIAMOND
Shape and Cutting Style ROUND BRILLIANT
Measurements 9.26 - 9.33 X 5.70 MM
GRADING RESULTS
Carat Weight 3.01 CARATS
Color Grade FANCY VIVID BLUE
Clarity Grade VVS 2
Cut Grade IDEAL

August 5, 2024
IGI Report Number LG644442231
Description LABORATORY GROWN DIAMOND
Shape and Cutting Style ROUND BRILLIANT
Measurements 9.26 - 9.33 X 5.70 MM
GRADING RESULTS
Carat Weight 3.01 CARATS
Color Grade FANCY VIVID BLUE
Clarity Grade VVS 2
Cut Grade IDEAL

PROPORTIONS



Sample Image Used



ADDITIONAL GRADING INFORMATION
Polish EXCELLENT
Symmetry EXCELLENT
Fluorescence NONE
Inscription(s) IGI LG644442231

ADDITIONAL GRADING INFORMATION
Polish EXCELLENT
Symmetry EXCELLENT
Fluorescence NONE
Inscription(s) IGI LG644442231
Comments: This Laboratory Grown Diamond was created by Chemical Vapor Deposition (CVD) growth process. Indications of post-growth treatment.

Comments: This Laboratory Grown Diamond was created by Chemical Vapor Deposition (CVD) growth process. Indications of post-growth treatment.

COLOR

D E F G H I J Faint Very Light Light

CLARITY

IF WS 1-2 VS 1-2 SI 1-2 I 1-3
Internally Flawless Very Very Slightly Included Very Slightly Included Slightly Included Included



August 5, 2024
IGI Report No LG644442231
ROUND BRILLIANT
9.26 - 9.33 X 5.70 MM
3.01 CARATS
FANCY VIVID BLUE
VVS 2
IDEAL
61.4%
58%
Medium To Slightly Thick (Faceted)
Pointed
EXCELLENT
EXCELLENT
NONE
IGI LG644442231
Comments: This Laboratory Grown Diamond was created by Chemical Vapor Deposition (CVD) growth process. Indications of post-growth treatment.