



ELECTRONIC COPY

LABORATORY GROWN DIAMOND REPORT

July 31, 2024  
IGI Report Number **LG644439439**  
Description **LABORATORY GROWN DIAMOND**  
Shape and Cutting Style **CUT CORNERED RECTANGULAR MODIFIED BRILLIANT**  
Measurements **13.92 X 9.39 X 6.39 MM**

GRADING RESULTS

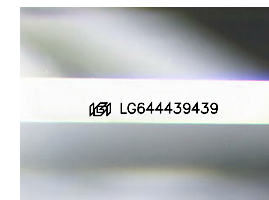
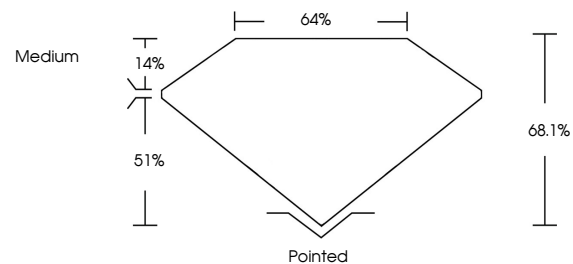
Carat Weight **7.19 CARATS**  
Color Grade **FANCY VIVID PINK**  
Clarity Grade **VS 1**

ADDITIONAL GRADING INFORMATION

Polish **EXCELLENT**  
Symmetry **EXCELLENT**  
Fluorescence **SLIGHT**  
Inscription(s) **IGI LG644439439**

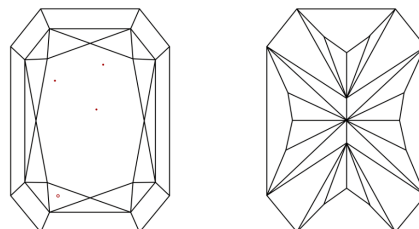
Comments: This Laboratory Grown Diamond was created by Chemical Vapor Deposition (CVD) growth process.  
Indications of post-growth treatment.

PROPORTIONS



Sample Image Used

CLARITY CHARACTERISTICS



KEY TO SYMBOLS

Red symbols indicate internal characteristics.  
Green symbols indicate external characteristics.

COLOR

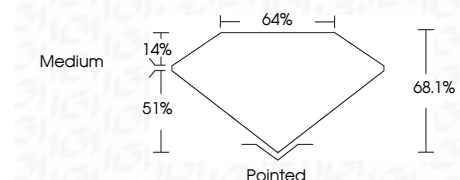
D E F G H I J Faint Very Light Light

CLARITY

IF VS 1-2 VS 1-2 SI 1-2 I 1-3  
Internally Flawless Very Very Slightly Included Very Slightly Included Slightly Included Included



July 31, 2024  
IGI Report Number **LG644439439**  
Description **LABORATORY GROWN DIAMOND**  
Shape and Cutting Style **CUT CORNERED RECTANGULAR MODIFIED BRILLIANT**  
Measurements **13.92 X 9.39 X 6.39 MM**  
GRADING RESULTS  
Carat Weight **7.19 CARATS**  
Color Grade **FANCY VIVID PINK**  
Clarity Grade **VS 1**



ADDITIONAL GRADING INFORMATION

Polish **EXCELLENT**  
Symmetry **EXCELLENT**  
Fluorescence **SLIGHT**  
Inscription(s) **IGI LG644439439**  
Comments: This Laboratory Grown Diamond was created by Chemical Vapor Deposition (CVD) growth process.  
Indications of post-growth treatment.



IGI



July 31, 2024  
IGI Report No **LG644439439**  
CUT CORNERED RECT. MODIFIED BRILLIANT  
13.92 X 9.39 X 6.39 MM  
7.19 CARATS  
FANCY VIVID PINK  
VS 1  
68.1%  
64%  
Medium  
Pointed  
EXCELLENT  
EXCELLENT  
SLIGHT  
IGI LG644439439  
Comments: This Laboratory Grown Diamond was created by Chemical Vapor Deposition (CVD) growth process.  
Indications of post-growth treatment.