

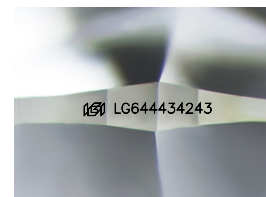
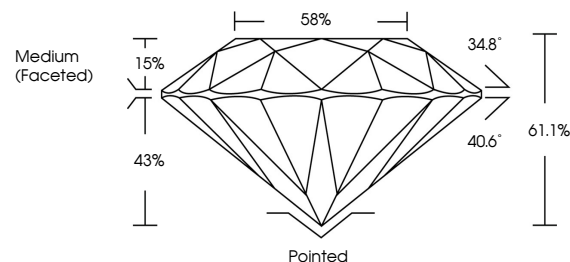


**ELECTRONIC COPY**

## LABORATORY GROWN DIAMOND REPORT

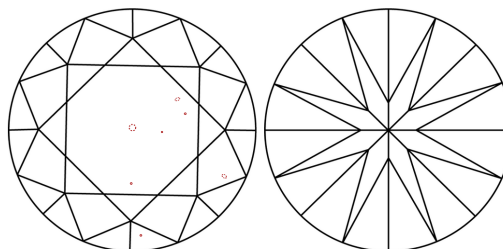
LG644434243  
Report verification at [lgi.org](https://lgi.org)

## PROPORTIONS



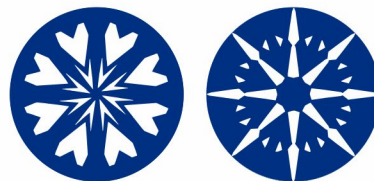
Sample Image Used

## CLARITY CHARACTERISTICS



### KEY TO SYMBOLS

Red symbols indicate internal characteristics.  
Green symbols indicate external characteristics.



**www.igi.org**

## COLOR

D E F G H I J Faint Very Light Light

## CLARITY

IF	VVS <sup>1-2</sup>	VS <sup>1-2</sup>	SI <sup>1-2</sup>	I <sup>1-3</sup>
Internally Flawless	Very Very Slightly Included	Very Slightly Included	Slightly Included	Included



© IGI 2020, International Gemological Institute

FD - 10 20

THIS DOCUMENT WAS PRODUCED WITH THE FOLLOWING SECURITY MEASURES: SPECIAL DOCUMENT PAPER, INK SCREENS, WATERMARK, BACKGROUND DESIGNS, HOLOGRAM AND OTHER SECURITY FEATURES NOT LISTED AND DO EXCEED DOCUMENT SECURITY INDUSTRY GUIDELINE

## LABORATORY GROWN DIAMOND REPORT



July 22, 2024

IGI Report Number **LG644434243**Description **LABORATORY GROWN DIAMOND**Shape and Cutting Style **ROUND BRILLIANT**

Measurements 9.71 - 9.78 X 5.96 MM

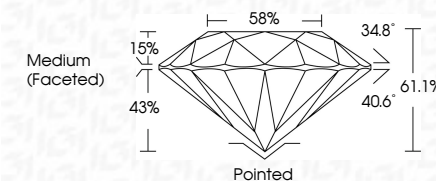
## GRADING RESULTS

Carat Weight **3.50 CARATS**

Color Grade **E**

Clarity Grade VS 1

Cut Grade **IDEAL**



### ADDITIONAL GRADING INFORMATION

Polish **EXCELLENT**Symmetry **EXCELLENT**Fluorescence **NONE**Inscription(s)  LG644434243

Comments: HEARTS & ARROWS

Comments: HEARTS & ARROWS  
This Laboratory Grown Diamond was created by  
Chemical Vapor Deposition (CVD) growth process.  
Type IIa



July 22, 2024  
GI Report No LG644434243  
ROUND BRILLIANT

<b>7-1 - 9.78 X 5.96 MM</b>	<b>3.50 CARATS</b>
Carat Weight	E
Color Grade	VS 1
Clarity Grade	IDP&L
Cut Grade	61.1%
Depth	58%
Table	Medium (Faceted)
Girdle	
Culet	Poined
Polish	EXCELLENT
Symmetry	EXCELLENT
Fluorescence	NONE
Reference(s)	gem/12644442/02

**Comments:**  
-HEARTS & ARROWS  
This Laboratory Grown Diamond was  
created by Chemical Vapor Deposition  
(CVD) growth process.