



**ELECTRONIC COPY**

## LABORATORY GROWN DIAMOND REPORT

LG644404699  
Report verification at [igi.org](http://igi.org)

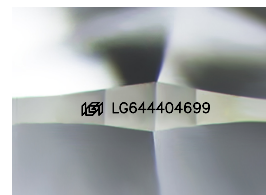
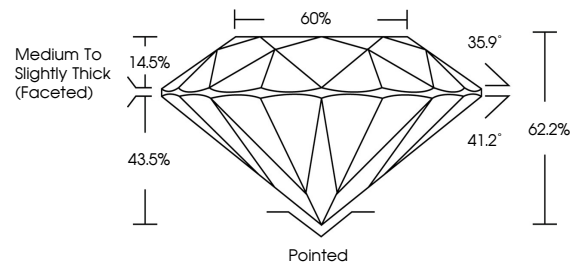
|                         |                          |
|-------------------------|--------------------------|
| July 20, 2024           |                          |
| IGI Report Number       | LG644404699              |
| Description             | LABORATORY GROWN DIAMOND |
| Shape and Cutting Style | ROUND BRILLIANT          |
| Measurements            | 8.33 - 8.37 X 5.19 MM    |
| GRADING RESULTS         |                          |
| Carat Weight            | 2.25 CARATS              |
| Color Grade             | G                        |
| Clarity Grade           | VS 1                     |
| Cut Grade               | IDEAL                    |

### ADDITIONAL GRADING INFORMATION

|                |                |
|----------------|----------------|
| Polish         | EXCELLENT      |
| Symmetry       | EXCELLENT      |
| Fluorescence   | NONE           |
| Inscription(s) | 15 LG644404699 |

Comments: This Laboratory Grown Diamond was created by Chemical Vapor Deposition (CVD) growth process.  
Type IIa

## PROPORTIONS



Sample Image Used

## COLOR

D E F G H I J Faint Very Light Light

## CLARITY

| IF                  | VVS <sup>1-2</sup>          | VS <sup>1-2</sup>      | SI <sup>1-2</sup> | I <sup>1-3</sup> |
|---------------------|-----------------------------|------------------------|-------------------|------------------|
| Internally Flawless | Very Very Slightly Included | Very Slightly Included | Slightly Included | Included         |



© IGI 2020, International Gemological Institute

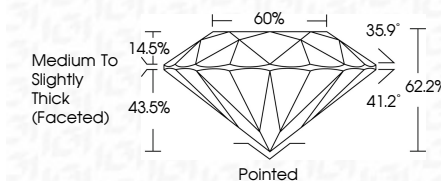
FD - 10 20

**www.igi.org**

## LABORATORY GROWN DIAMOND REPORT



|                         |                          |
|-------------------------|--------------------------|
| July 20, 2024           |                          |
| IGI Report Number       | LG644404699              |
| Description             | LABORATORY GROWN DIAMOND |
| Shape and Cutting Style | ROUND BRILLIANT          |
| Measurements            | 8.33 - 8.37 X 5.19 MM    |
| GRADING RESULTS         |                          |
| Carat Weight            | 2.25 CARATS              |
| Color Grade             | G                        |
| Clarity Grade           | VS 1                     |
| Cut Grade               | IDEAL                    |



### ADDITIONAL GRADING INFORMATION

|   |   |
|---|---|
| Polish  | EXCELLENT   |
| Symmetry  | EXCELLENT   |
| Fluorescence  | NONE  |
| Inscription(s)  |  LG644404699 |
| <p>Comments: This Laboratory Grown Diamond was created by Chemical Vapor Deposition (CVD) growth process.</p> <p>Type IIa</p> |   |



July 20, 2024  
GI Report No LG644404699

|                      |   |
|----------------------|---|
| <b>Report No.</b>    | <b>LS644699</b>                         |
| <b>Color</b>         | <b>BRIGHT BRILLANT</b>                  |
| <b>Weight</b>        | <b>3.35 - 3.37 X 5.19 MM</b>            |
| <b>Carat Weight</b>  | <b>2.25 CARATS</b>                      |
| <b>Color Grade</b>   | <b>G</b>                                |
| <b>Clarity Grade</b> | <b>VSI 1</b>                            |
| <b>Cut Grade</b>     | <b>IDEAL</b>                            |
| <b>Depth</b>         | <b>62.2%</b>                            |
| <b>Table</b>         | <b>65%</b>                              |
| <b>Girdle</b>        | <b>Medium to Slightly Thick (Feetd)</b> |
| <b>Culet</b>         | <b>Paired</b>                           |
| <b>Polish</b>        | <b>EXCELLENT</b>                        |
| <b>Symmetry</b>      | <b>EXCELLENT</b>                        |
| <b>Fluorescence</b>  | <b>NONE</b>                             |

**Comments:**  
This Laboratory Grown Diamond was  
created by Chemical Vapor Deposition  
(CVD) growth process.