



**ELECTRONIC COPY**

## LABORATORY GROWN DIAMOND REPORT

July 15, 2024	
IGI Report Number	LG643440203
Description	LABORATORY GROWN DIAMOND
Shape and Cutting Style	CUT CORNERED RECTANGULAR MODIFIED BRILLIANT
Measurements	8.97 X 6.17 X 4.18 MM

## GRADING RESULTS

Carat Weight	2.02 CARATS
Color Grade	H
Clarity Grade	VS 1

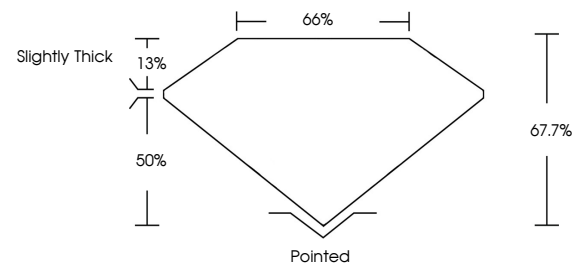
### ADDITIONAL GRADING INFORMATION

Polish	EXCELLENT
Symmetry	EXCELLENT
Fluorescence	NONE
Inscription(s)	 LG643440203

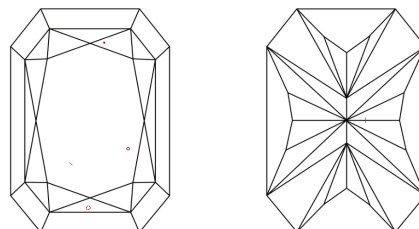
Comments: This Laboratory Grown Diamond was created by Chemical Vapor Deposition (CVD) growth process.  
Type IIa

LG643440203  
Report verification at [lgi.org](https://lgi.org)

## PROPORTIONS

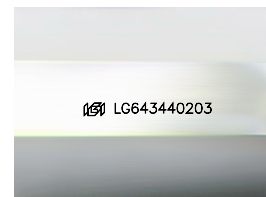


## CLARITY CHARACTERISTICS



## KEY TO SYMBOLS

Red symbols indicate internal characteristics.  
Green symbols indicate external characteristics.



Sample Image Used

## COLOR

D E F G H I J Faint Very Light Light

## CLARITY

IF	VVS <sup>1-2</sup>	VS <sup>1-2</sup>	SI <sup>1-2</sup>	I <sup>1-3</sup>
Internally Flawless	Very Very Slightly Included	Very Slightly Included	Slightly Included	Included

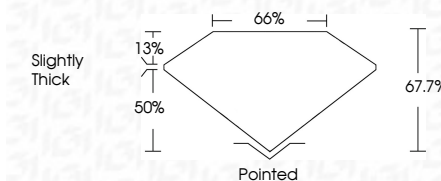


July 15, 2024	
IGI Report Number	LG643440203
Description	LABORATORY GROWN DIAMOND
Shape and Cutting Style	CUT CORNERED RECTANGULAR MODIFIED BRILLIANT

Measurements **8.97 X 6.17 X 4.18 MM**

## GRADING RESULTS

Carat Weight	2.02 CARATS
Color Grade	H
Clarity Grade	VS 1



### ADDITIONAL GRADING INFORMATION

Polish	EXCELLENT
Symmetry	EXCELLENT
Fluorescence	NONE
Inscription(s)	LG643440203

Comments: This Laboratory Grown Diamond was created by Chemical Vapor Deposition (CVD) growth process.  
Type IIa



© IGI 2020, International Gemological Institute

FD - 10 20

**www.igi.org**

July 15, 2024	GL Report No. LG543442003	CU CORNERED RECT. MODIFIED BRILLIANT
197 X 4.17 X 4.18 MM	Carat Weight	2.02 CARATS
	Color Grade	H
	Clarity Grade	VS 1
	Depth	67.7%
	Table	66%
	Grade	Slightly Thick
	Color	Pinked
	Polish	EXCELLENT
	Symmetry	EXCELLENT
	Fluorescence	NONE
	Inscriptions(s)	1891 LG543442003

Comments: Emerald Green Diamond was created by Chemical Vapor Deposition (CVD) growth process.

Type IIG