



ELECTRONIC COPY

LABORATORY GROWN DIAMOND REPORT

July 13, 2024	
IGI Report Number	LG643428281
Description	LABORATORY GROWN DIAMOND
Shape and Cutting Style	ROUND BRILLIANT
Measurements	8.67 - 8.70 X 5.19 MM

GRADING RESULTS

Carat Weight	2.40 CARATS
Color Grade	G
Clarity Grade	VS 2
Cut Grade	IDEAL

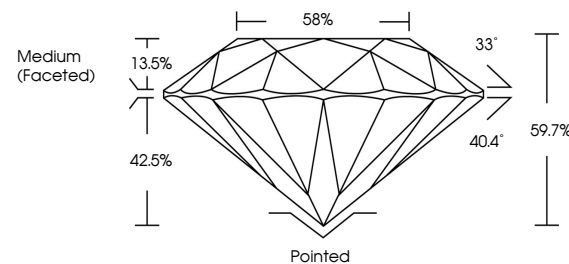
ADDITIONAL GRADING INFORMATION

Polish	EXCELLENT
Symmetry	EXCELLENT
Fluorescence	NONE
Inscription(s)	 LG643428281

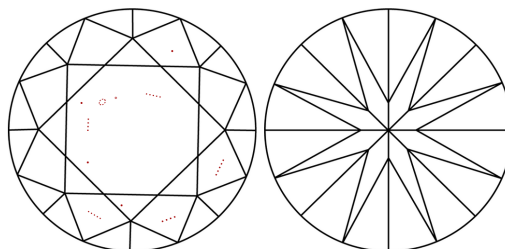
Comments: This Laboratory Grown Diamond was created by Chemical Vapor Deposition (CVD) growth process.
Type IIa

LG643428281
Report verification at igi.org

PROPORTIONS

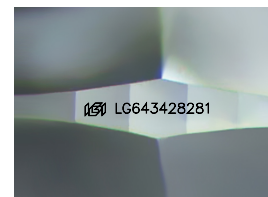


CLARITY CHARACTERISTICS



KEY TO SYMBOLS

Red symbols indicate internal characteristics.
Green symbols indicate external characteristics.



Sample Image Used

COLOR

D E F G H I J Faint Very Light Light

CLARITY

IF	VVS ¹⁻²	VS ¹⁻²	SI ¹⁻²	I ¹⁻³
Internally Flawless	Very Very Slightly Included	Very Slightly Included	Slightly Included	Included



© IGI 2020, International Gemological Institute

FD - 10 20

www.igi.org

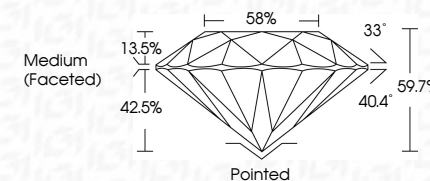
LABORATORY GROWN DIAMOND REPORT



July 13, 2024	
IGI Report Number	LG643428281
Description	LABORATORY GROWN DIAMOND
Shape and Cutting Style	ROUND BRILLIANT
Measurements	8.67 - 8.70 X 5.19 MM

GRADING RESULTS

Carat Weight	2.40 CARATS
Color Grade	G
Clarity Grade	VS 2
Cut Grade	IDEAL



ADDITIONAL GRADING INFORMATION

Polish	EXCELLENT
Symmetry	EXCELLENT
Fluorescence	NONE
Inscription(s)	(GSI) LG64342828
<p>Comments: This Laboratory Grown Diamond was created by Chemical Vapor Deposition (CVD) growth process.</p> <p>Type IIa</p>	



July 13, 2024
GI Report No LG643428281

IGI Report No LG643428281
ROUND BRILLIANT
3.67 - 9.70 Y 5.10 MM

3.67 - 8.70 X 5.19 MM

Color Grade	VS2	IDEAL
Clarity Grade		
Cut Grade		

Cut Grade	IDEAL
Depth	59.7%
Table	58%

Table	Girdle	Medium (Faceted)	66%

	Culet	Pointed	EXCELLENT
Polish			

Symmetry	EXCELLENT
Fluorescence	NONE

Comments:
This Laboratory Grown Diamond was created by Chemical Vapor Deposition (CVD) growth process.