



# INTERNATIONAL GEMOLOGICAL INSTITUTE

ELECTRONIC COPY

## LABORATORY GROWN DIAMOND REPORT

LG643424720

### LABORATORY GROWN DIAMOND REPORT

#### IGI LABORATORY GROWN DIAMOND IDENTIFICATION REPORT

August 5, 2024  
IGI Report Number LG643424720  
Description LABORATORY GROWN DIAMOND  
Shape and Cutting Style ROUND BRILLIANT  
Measurements 6.71 - 6.75 X 4.15 MM

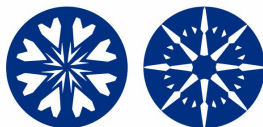
#### GRADING RESULTS

Carat Weight 1.16 CARAT  
Color Grade F  
Clarity Grade VVS 2  
Cut Grade IDEAL

#### ADDITIONAL GRADING INFORMATION

Polish EXCELLENT  
Symmetry EXCELLENT  
Fluorescence NONE  
Inscription(s) IGI LG643424720

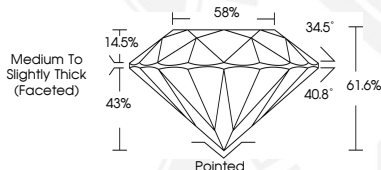
Comments: HEARTS & ARROWS  
As Grown - No indication of post-growth treatment.  
This Laboratory Grown Diamond was created by Chemical Vapor  
Deposition (CVD) growth process.



HEARTS & ARROWS



Sample Image Used



#### IGI LABORATORY GROWN DIAMOND ID REPORT

August 5, 2024  
IGI Report Number LG643424720  
ROUND BRILLIANT  
6.71 - 6.75 X 4.15 MM  
Carat Weight 1.16 CARAT  
Color Grade F  
Clarity Grade VVS 2  
Cut Grade IDEAL  
Polish EXCELLENT  
Symmetry EXCELLENT  
Fluorescence NONE  
Inscription(s) IGI LG643424720  
Comments: HEARTS & ARROWS As  
Grown - No indication of post-  
growth treatment. This Laboratory  
Grown Diamond was created by  
Chemical Vapor Deposition (CVD)  
growth process.

#### IGI LABORATORY GROWN DIAMOND ID REPORT

August 5, 2024  
IGI Report Number LG643424720  
ROUND BRILLIANT  
6.71 - 6.75 X 4.15 MM  
Carat Weight 1.16 CARAT  
Color Grade F  
Clarity Grade VVS 2  
Cut Grade IDEAL  
Polish EXCELLENT  
Symmetry EXCELLENT  
Fluorescence NONE  
Inscription(s) IGI LG643424720  
Comments: HEARTS & ARROWS As  
Grown - No indication of post-  
growth treatment. This Laboratory  
Grown Diamond was created by  
Chemical Vapor Deposition (CVD)  
growth process.



THIS DOCUMENT WAS PRODUCED WITH THE FOLLOWING SECURITY MEASURES: SPECIAL DOCUMENT PAPER, INK SCREENS, WATERMARK, BACKGROUND DESIGN, HOLOGRAM AND OTHER SECURITY FEATURES NOT LISTED AND DO EXCEED DOCUMENT SECURITY INDUSTRY GUIDELINES.

For terms & conditions and to verify this report, please visit [www.igi.org](http://www.igi.org)