



**ELECTRONIC COPY**

LG643421358  
Report verification at igi.org



July 19, 2024  
IGI Report Number **LG643421358**  
Description **LABORATORY GROWN DIAMOND**  
Shape and Cutting Style **ROUND BRILLIANT**  
Measurements **8.17 - 8.22 X 5.01 MM**  
**GRADING RESULTS**  
Carat Weight **2.10 CARATS**  
Color Grade **FANCY VIVID PINK**  
Clarity Grade **VVS 2**  
Cut Grade **IDEAL**

July 19, 2024  
IGI Report Number **LG643421358**  
Description **LABORATORY GROWN DIAMOND**  
Shape and Cutting Style **ROUND BRILLIANT**  
Measurements **8.17 - 8.22 X 5.01 MM**

**GRADING RESULTS**

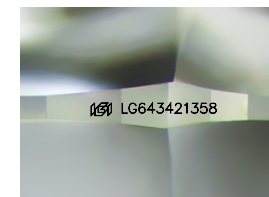
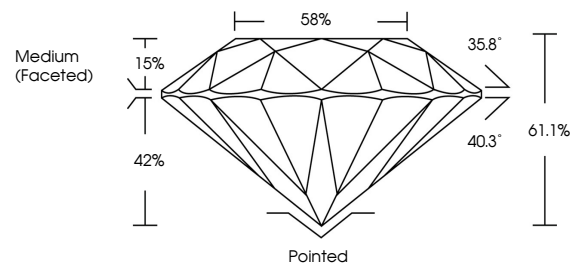
Carat Weight **2.10 CARATS**  
Color Grade **FANCY VIVID PINK**  
Clarity Grade **VVS 2**  
Cut Grade **IDEAL**

**ADDITIONAL GRADING INFORMATION**

Polish **EXCELLENT**  
Symmetry **EXCELLENT**  
Fluorescence **SLIGHT**  
Inscription(s) **LG643421358**

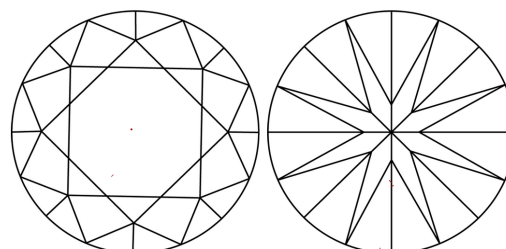
Comments: This Laboratory Grown Diamond was created by Chemical Vapor Deposition (CVD) growth process.  
Indications of post-growth treatment.

**PROPORTIONS**



Sample Image Used

**CLARITY CHARACTERISTICS**



**KEY TO SYMBOLS**

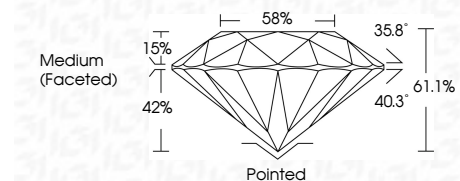
Red symbols indicate internal characteristics.  
Green symbols indicate external characteristics.

**COLOR**

D E F G H I J Faint Very Light Light

**CLARITY**

IF	VS <sup>1-2</sup>	VS <sup>1-2</sup>	SI <sup>1-2</sup>	I <sup>1-3</sup>
Internally Flawless	Very Very Slightly Included	Very Slightly Included	Slightly Included	Included



**ADDITIONAL GRADING INFORMATION**

Polish **EXCELLENT**  
Symmetry **EXCELLENT**  
Fluorescence **SLIGHT**  
Inscription(s) **LG643421358**  
Comments: This Laboratory Grown Diamond was created by Chemical Vapor Deposition (CVD) growth process.  
Indications of post-growth treatment.



July 19, 2024  
IGI Report No LG643421358  
**ROUND BRILLIANT**  
8.17 - 8.22 X 5.01 MM  
2.10 CARATS  
FANCY VIVID PINK  
VVS 2  
IDEAL  
61.1%  
58%  
Medium (Faceted)Pointed  
EXCELLENT  
EXCELLENT  
SLIGHT  
IGI LG643421358  
Comments: This Laboratory Grown Diamond was created by Chemical Vapor Deposition (CVD) growth process.  
Indications of post-growth treatment.