



ELECTRONIC COPY

LG642491505
Report verification at igi.org



July 17, 2024

IGI Report Number **LG642491505**

Description **LABORATORY GROWN DIAMOND**

Shape and Cutting Style **EMERALD CUT**

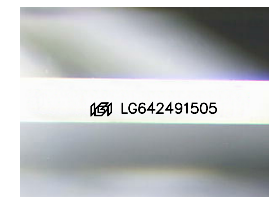
Measurements **10.70 X 7.17 X 4.81 MM**

GRADING RESULTS

Carat Weight **3.68 CARATS**

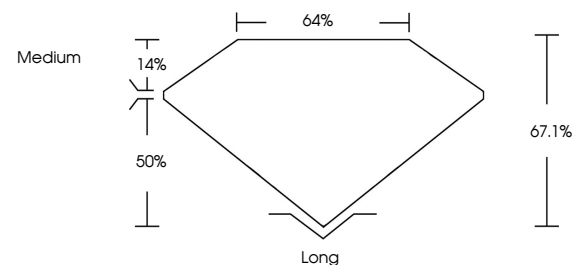
Color Grade **FANCY INTENSE PINK**

Clarity Grade **VS 1**

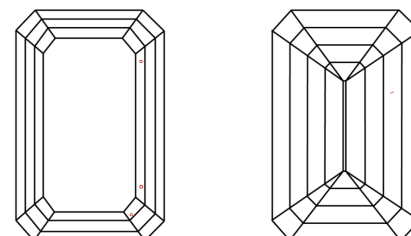


Sample Image Used

PROPORTIONS



CLARITY CHARACTERISTICS



KEY TO SYMBOLS

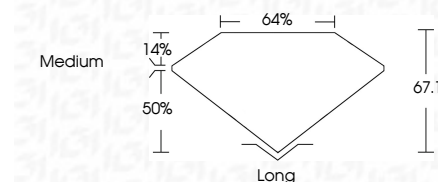
Red symbols indicate internal characteristics.
Green symbols indicate external characteristics.

COLOR

D E F G H I J Faint Very Light Light

CLARITY

IF	VS ¹⁻²	VS ¹⁻²	SI ¹⁻²	I ¹⁻³
Internally Flawless	Very Very Slightly Included	Very Slightly Included	Slightly Included	Included



ADDITIONAL GRADING INFORMATION

Polish **EXCELLENT**

Symmetry **VERY GOOD**

Fluorescence **SLIGHT**

Inscription(s) **IGI LG642491505**

Comments: This Laboratory Grown Diamond was created by Chemical Vapor Deposition (CVD) growth process. Indications of post-growth treatment.



IGI

July 17, 2024	IGI Report No. LG642491505	EMERALD CUT	3.68 CARATS	FANCY INTENSE PINK	VS 1	67.1% 64%	Medium	Long	EXCELLENT	VERY GOOD	SLIGHT	IGI LG642491505
Carat Weight	Color Grade	Clarity Grade	Depth	Table	Graile	Cutlet	Polish	Symmetry	Fluorescence	Inscription(s)		

Comments: This Laboratory Grown Diamond was created by Chemical Vapor Deposition (CVD) growth process. Indications of post-growth treatment.

