



ELECTRONIC COPY

LG642491385
Report verification at igi.org



September 26, 2024
IGI Report Number LG642491385
Description LABORATORY GROWN DIAMOND
Shape and Cutting Style ROUND BRILLIANT
Measurements 6.39 - 6.45 X 3.91 MM
GRADING RESULTS
Carat Weight 0.99 CARAT
Color Grade FANCY LIGHT PINK
Clarity Grade VS 1
Cut Grade IDEAL

September 26, 2024
IGI Report Number LG642491385
Description LABORATORY GROWN DIAMOND
Shape and Cutting Style ROUND BRILLIANT
Measurements 6.39 - 6.45 X 3.91 MM

GRADING RESULTS

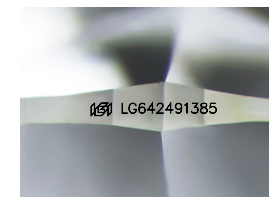
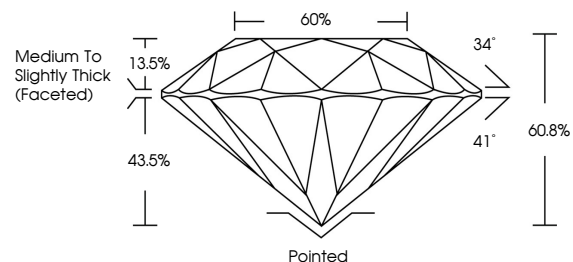
Carat Weight 0.99 CARAT
Color Grade FANCY LIGHT PINK
Clarity Grade VS 1
Cut Grade IDEAL

ADDITIONAL GRADING INFORMATION

Polish EXCELLENT
Symmetry EXCELLENT
Fluorescence SLIGHT
Inscription(s) IGI LG642491385

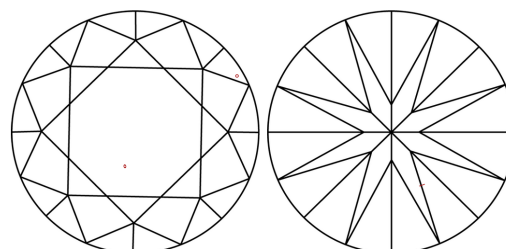
Comments: This Laboratory Grown Diamond was created by High Pressure High Temperature (HPHT) growth process. Indications of post-growth treatment.

PROPORTIONS



Sample Image Used

CLARITY CHARACTERISTICS



KEY TO SYMBOLS

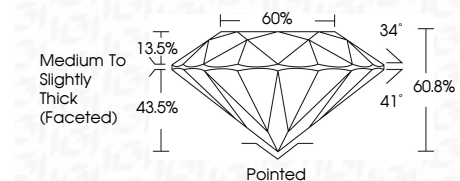
Red symbols indicate internal characteristics.
Green symbols indicate external characteristics.

COLOR

D E F G H I J Faint Very Light Light

CLARITY

IF VS 1-2 VS 1-2 SI 1-2 I 1-3
Internally Flawless Very Very Slightly Included Very Slightly Included Slightly Included Included



ADDITIONAL GRADING INFORMATION

Polish EXCELLENT
Symmetry EXCELLENT
Fluorescence SLIGHT
Inscription(s) IGI LG642491385
Comments: This Laboratory Grown Diamond was created by High Pressure High Temperature (HPHT) growth process. Indications of post-growth treatment.



September 26, 2024
IGI Report No. LG642491385
ROUND BRILLIANT
6.39 - 6.45 X 3.91 MM
0.99 CARAT
FANCY LIGHT PINK
VS 1
IDEAL
60.8%
Medium To Slightly Thick (Faceted)
Pointed
EXCELLENT
EXCELLENT
SLIGHT
IGI LG642491385
Comments: This Laboratory Grown Diamond was created by High Pressure High Temperature (HPHT) growth process. Indications of post-growth treatment.