

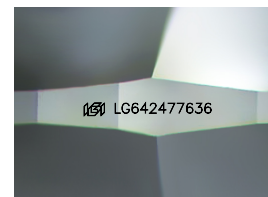
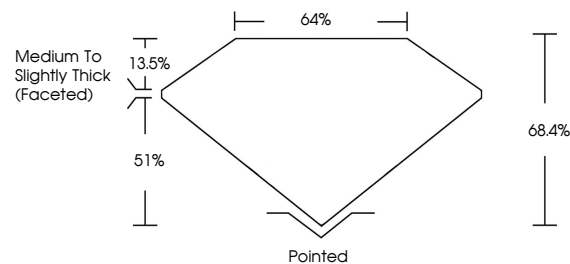


ELECTRONIC COPY

LABORATORY GROWN DIAMOND REPORT

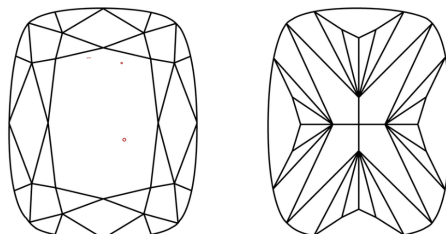
LG642477636
Report verification at lgi.org

PROPORTIONS



Sample Image Used

CLARITY CHARACTERISTICS



KEY TO SYMBOLS

Red symbols indicate internal characteristics.
Green symbols indicate external characteristics.

COLOR

D E F G H I J Faint Very Light Light

CLARITY

| IF | VVS ¹⁻² | VS ¹⁻² | SI ¹⁻² | I ¹⁻³ |
|---------------------|-----------------------------|------------------------|-------------------|------------------|
| Internally Flawless | Very Very Slightly Included | Very Slightly Included | Slightly Included | Included |



© IGI 2020, International Gemological Institute

FD - 10 20

www.igi.org

LABORATORY GROWN DIAMOND REPORT



July 11, 2024

IGI Report Number **LG642477636**Description **LABORATORY GROWN DIAMOND**Shape and Cutting Style **CUSHION BRILLIANT**

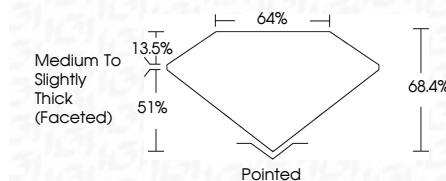
Measurements 8.19 X 6.48 X 4.43 MM

GRADING RESULTS

Carat Weight 1.81 CARAT

Color Grade E

Clarity Grade VS 1



ADDITIONAL GRADING INFORMATION

Polish **EXCELLENT**Symmetry **EXCELLENT**Fluorescence **NONE**Inscription(s) LG642477636

Comments: This Laboratory Grown Diamond was created by Chemical Vapor Deposition (CVD) growth process.
Type IIa



July 11, 2024
GI Report No LG642477636
CUSHION BRILLIANT

| | | |
|------------|------------------------------------|-----------------|
| 1.81 CARAT | VS 1 | Pointed |
| | 68.4% | EXCELLENT |
| | 64% | EXCELLENT |
| | Medium To Slightly Thick (faceted) | NONE |
| | | gem/12649777564 |

Comments:
This Laboratory Grown Diamond was created by Chemical Vapor Deposition (CVD) growth process.