



ELECTRONIC COPY

LG642470435
Report verification at igi.org

LABORATORY GROWN DIAMOND REPORT



July 12, 2024

IGI Report Number **LG642470435**Description **LABORATORY GROWN DIAMOND**Shape and Cutting Style **ROUND BRILLIANT**

Measurements 8.74 - 8.84 X 5.31 MM

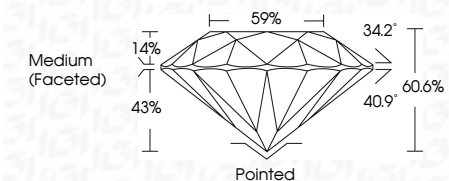
GRADING RESULTS

Carat Weight **2.51 CARATS**

Color Grade **FANCY INTENSE PINK**

Clarity Grade VS 2

Cut Grade **IDEAL**



ADDITIONAL GRADING INFORMATION

Polish **EXCELLEN**Symmetry **EXCELLENCE**

Fluorescence SLIGHTLY INCREASED

Inscription(s) LG64247043

Comments: This Laboratory Grown Diamond was created by Chemical Vapor Deposition (CVD) growth process.

Indications of post-growth treatment.



© IGI 2020, International Gemological Institute

FD - 10 20

www.igi.org

THIS DOCUMENT WAS PRODUCED WITH THE FOLLOWING SECURITY MEASURES: SPECIAL DOCUMENT PAPER, INK SCREENS, WATERMARK, BACKGROUND DESIGNS, HOLOGRAM AND OTHER SECURITY FEATURES NOT LISTED AND DO EXCEED DOCUMENT SECURITY INDUSTRY GUIDELINES

July 12, 2024
GI Report No LG642470435
ROUND BRILLIANT

8.74 - 8.84 X 5.31 MM

3.74 - 8.84 X 5.31 MM
Carat Weight 2.51 CARATS
Color Grade FANCY INTENSE PINK

Color Grade	FANCY INTENSE PINK
Clarity Grade	VS 2

	VS 2	IDEAL	40.6%
Clarity Grade			
Cut Grade			
Depth			

Depth	60.6%
Table	59%

Table	59%
Girdle	Medium (Faceted)

Medium (Faceted)

Culet	Pointed
-------	---------

Polish	EXCELLENT
Symmetry	EXCELLENT

Symmetry	EXCELLENT
Fluorescence	SLIGHT

Fluorescence	SLIGHT
Inscription(s)	1591 LG-642470435

Comments:

Comments:
This Laboratory Grown Diamond was created by Chemical Vapor Deposition

created by Chemical Vapor Deposition (CVD) growth process.

indications of post-growth treatment.