



ELECTRONIC COPY

LG642452009 Report verification at igi.org

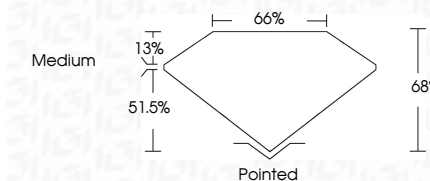


July 5, 2024 IGI Report Number LG642452009 Description LABORATORY GROWN DIAMOND Shape and Cutting Style CUT CORNERED RECTANGULAR MODIFIED BRILLIANT

Measurements 8.90 X 6.29 X 4.28 MM

GRADING RESULTS

Carat Weight 2.06 CARATS Color Grade D Clarity Grade VS 1



ADDITIONAL GRADING INFORMATION

Polish EXCELLENT Symmetry EXCELLENT Fluorescence NONE Inscription(s) IGI LG642452009 Comments: This Laboratory Grown Diamond was created by Chemical Vapor Deposition (CVD) growth process. Type IIa



IGI

July 5, 2024 IGI Report No LG642452009 CUT CORNERED RECT. MODIFIED BRILLIANT 8.90 X 6.29 X 4.28 MM 2.06 CARATS D VS 1 68% 65% Medium Pointed EXCELLENT EXCELLENT NONE IGI LG642452009 Comments: This Laboratory Grown Diamond was created by Chemical Vapor Deposition (CVD) growth process. Type IIa

LABORATORY GROWN DIAMOND REPORT

July 5, 2024 IGI Report Number LG642452009 Description LABORATORY GROWN DIAMOND Shape and Cutting Style CUT CORNERED RECTANGULAR MODIFIED BRILLIANT Measurements 8.90 X 6.29 X 4.28 MM

GRADING RESULTS

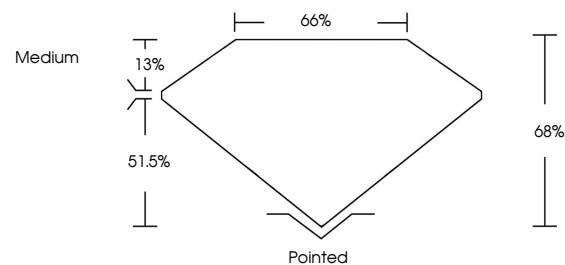
Carat Weight 2.06 CARATS Color Grade D Clarity Grade VS 1

ADDITIONAL GRADING INFORMATION

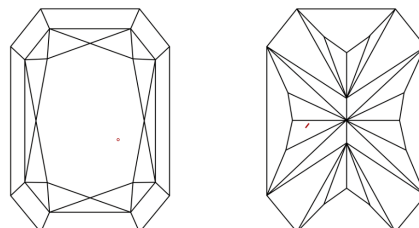
Polish EXCELLENT Symmetry EXCELLENT Fluorescence NONE Inscription(s) IGI LG642452009

Comments: This Laboratory Grown Diamond was created by Chemical Vapor Deposition (CVD) growth process. Type IIa

PROPORTIONS

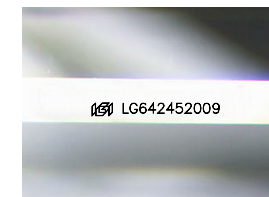


CLARITY CHARACTERISTICS



KEY TO SYMBOLS

Red symbols indicate internal characteristics. Green symbols indicate external characteristics.



Sample Image Used

COLOR

D E F G H I J Faint Very Light Light

CLARITY

IF VS 1-2 VS 1-2 SI 1-2 I 1-3 Internally Flawless Very Very Slightly Included Very Slightly Included Slightly Included Included

