



ELECTRONIC COPY

LABORATORY GROWN DIAMOND REPORT

LG642448204
Report verification at igi.org

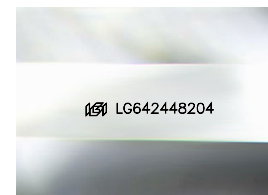
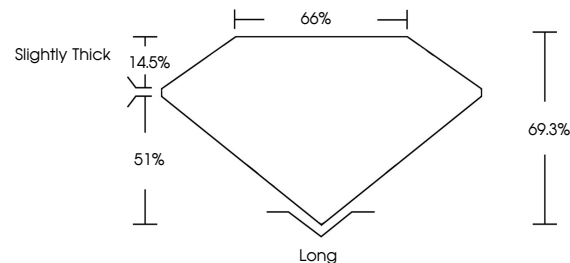
July 5, 2024	
IGI Report Number	LG642448204
Description	LABORATORY GROWN DIAMOND
Shape and Cutting Style	EMERALD CUT
Measurements	8.89 X 6.52 X 4.52 MM
GRADING RESULTS	
Carat Weight	2.58 CARATS
Color Grade	G
Clarity Grade	VS 1

ADDITIONAL GRADING INFORMATION

Polish	EXCELLENT
Symmetry	EXCELLENT
Fluorescence	NONE
Inscription(s)	151 LG 642448204

Comments: This Laboratory Grown Diamond was created by Chemical Vapor Deposition (CVD) growth process.
Type IIa

PROPORTIONS



Sample Image Used

COLOR

D E F G H I J Faint Very Light Light

CLARITY

IF	VVS ^{1,2}	VS ^{1,2}	SI ^{1,2}	I ^{1,3}
Internally Flawless	Very Very Slightly Included	Very Slightly Included	Slightly Included	Included

LABORATORY GROWN DIAMOND REPORT



July 5, 2024	
IGI Report Number	LG642448204
Description	LABORATORY GROWN DIAMOND
Shape and Cutting Style	EMERALD CUT
Measurements	8.89 X 6.52 X 4.52 MM
GRADING RESULTS	
Carat Weight	2.58 CARATS
Color Grade	G
Clarity Grade	VS 1

ADDITIONAL GRADING INFORMATION

Polish	EXCELLENT
Symmetry	EXCELLENT
Fluorescence	NONE
Inscription(s)	 LG642448204
<p>Comments: This Laboratory Grown Diamond was created by Chemical Vapor Deposition (CVD) growth process.</p> <p>Type IIa</p>	



IG

www.igi.org

© IGI 2020, International Gemological Institute

FD - 10 20



THIS DOCUMENT WAS PRODUCED WITH THE FOLLOWING SECURITY MEASURES: SPECIAL DOCUMENT PAPER, INK SCREENS, WATERMARK, BACKGROUND DESIGNS, HOLOGRAM AND OTHER SECURITY FEATURES NOT LISTED AND DO EXCEED DOCUMENT SECURITY INDUSTRY GUIDELINES

July 5, 2024
GI Report No LG642448204

IGI Report No L

3.89 X 6.52 X 4.52 MM

3.89 X 6.52 X 4.52 MM
Carat Weight 2.58 CAPATS

Color Grade **G**

Clarity Grade	VS 1
---------------	------

Depth	69.3%
Table	4.6%

100%	Slightly Thick
Girdle	

Culet	Long
Polish	EXCELLENT

Symmetry

Fluorescence	NONE
excitation(e)	488 564 680

151 15062744204

10

Comments:
This Laboratory Grown Diamond was created by Chemical Vapor Deposition

created by chemical vapor deposition (CVD) growth process.

type IIIa