

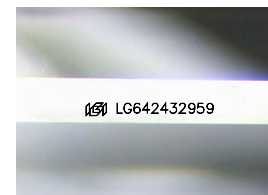
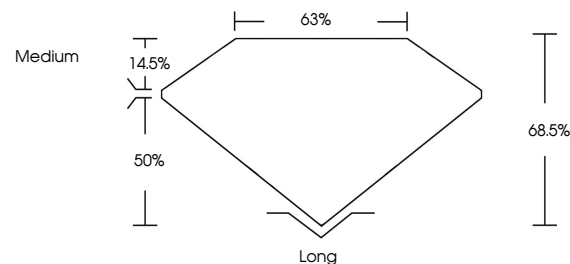


ELECTRONIC COPY

LABORATORY GROWN DIAMOND REPORT

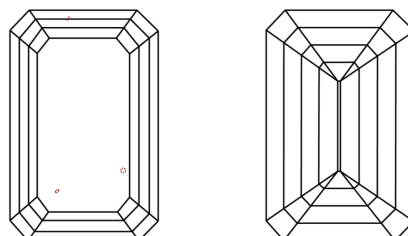
LG642432959
Report verification at igi.org

PROPORTIONS



Sample Image Used

CLARITY CHARACTERISTICS



KEY TO SYMBOLS

Red symbols indicate internal characteristics.
Green symbols indicate external characteristics.

COLOR

D E F G H I J Faint Very Light Light

CLARITY

| IF | VVS ¹⁻² | VS ¹⁻² | SI ¹⁻² | I ¹⁻³ |
|---------------------|-----------------------------|------------------------|-------------------|------------------|
| Internally Flawless | Very Very Slightly Included | Very Slightly Included | Slightly Included | Included |

LABORATORY GROWN DIAMOND REPORT



July 6, 2024

IGI Report Number **LG642432959**Description **LABORATORY GROWN DIAMOND**

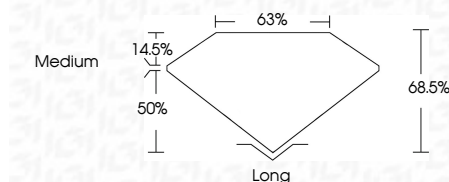
Shape and Cutting Style **EMERALD CUT**

Measurements 9.08 X 6.06 X 4.15 MM

GRADING RESULTS

Carat Weight **2.27 CARATS**

| Color Grade | F |
|-------------|---|
|-------------|---|

Clarity Grade VVS 2

ADDITIONAL GRADING INFORMATION

Polish **EXCELLENT**Symmetry **EXCELLENT**Fluorescence **NONE**Inscription(s)  LG642432959

Comments: This Laboratory Grown Diamond was created by Chemical Vapor Deposition (CVD) growth process.
Type IIa



© IGI 2020, International Gemological Institute

FD - 10 20

www.igi.org

THIS DOCUMENT WAS PRODUCED WITH THE FOLLOWING SECURITY MEASURES: SPECIAL DOCUMENT PAPER, INK SCREENS, WATERMARK, BACKGROUND DESIGNS, HOLOGRAM AND OTHER SECURITY FEATURES NOT LISTED AND DO EXCEED DOCUMENT SECURITY INDUSTRY GUIDELINES

July 6, 2024
GI Report No LG642432959

| | | |
|------------------------|------------|-------------|
| Report No. 15640232959 | 227 CARATS | Long |
| Carat Weight | VVS 2 | EXCELLENT |
| Color Grade | D8.6 | EXCELLENT |
| Clarity Grade | 63% | NONE |
| Depth | Medium | 99.1 Carats |
| Table | | |
| Polish | | |
| Symmetry | | |
| Fluorescence | | |

Comments:
This Laboratory Grown Diamond was
created by Chemical Vapor Deposition
(CVD) growth process.