



ELECTRONIC COPY

LABORATORY GROWN DIAMOND REPORT

July 18, 2024  
IGI Report Number **LG642431407**  
Description **LABORATORY GROWN DIAMOND**  
Shape and Cutting Style **CUT CORNERED RECTANGULAR MODIFIED BRILLIANT**  
Measurements **10.79 X 7.49 X 5.25 MM**

GRADING RESULTS

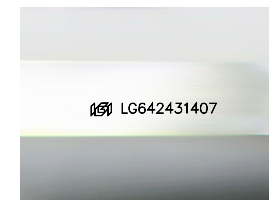
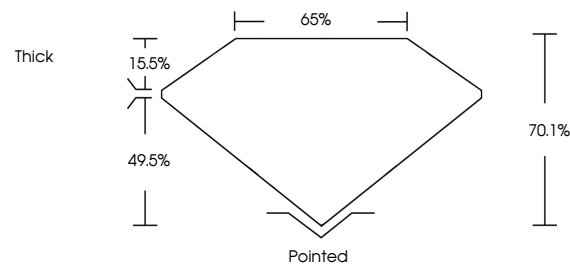
Carat Weight **4.05 CARATS**  
Color Grade **FANCY VIVID PINK**  
Clarity Grade **VS 2**

ADDITIONAL GRADING INFORMATION

Polish **EXCELLENT**  
Symmetry **VERY GOOD**  
Fluorescence **SLIGHT**  
Inscription(s) **IGI LG642431407**

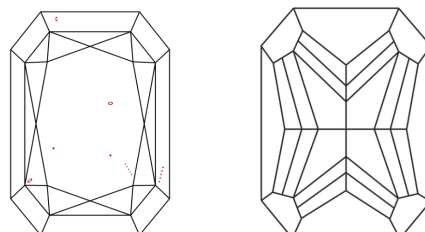
Comments: This Laboratory Grown Diamond was created by Chemical Vapor Deposition (CVD) growth process.  
Indications of post-growth treatment.

PROPORTIONS



Sample Image Used

CLARITY CHARACTERISTICS



KEY TO SYMBOLS

Red symbols indicate internal characteristics.  
Green symbols indicate external characteristics.

COLOR

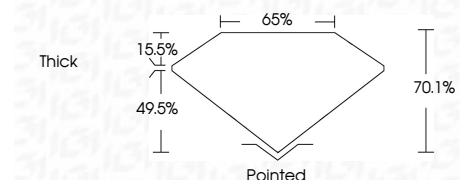
D E F G H I J Faint Very Light Light

CLARITY

IF VS 1-2 VS 1-2 SI 1-2 I 1-3  
Internally Flawless Very Very Slightly Included Very Slightly Included Slightly Included Included



July 18, 2024  
IGI Report Number **LG642431407**  
Description **LABORATORY GROWN DIAMOND**  
Shape and Cutting Style **CUT CORNERED RECTANGULAR MODIFIED BRILLIANT**  
Measurements **10.79 X 7.49 X 5.25 MM**  
GRADING RESULTS  
Carat Weight **4.05 CARATS**  
Color Grade **FANCY VIVID PINK**  
Clarity Grade **VS 2**



ADDITIONAL GRADING INFORMATION

Polish **EXCELLENT**  
Symmetry **VERY GOOD**  
Fluorescence **SLIGHT**  
Inscription(s) **IGI LG642431407**  
Comments: This Laboratory Grown Diamond was created by Chemical Vapor Deposition (CVD) growth process.  
Indications of post-growth treatment.



July 18, 2024  
IGI Report No **LG642431407**  
CUT **CORNERED RECT. MODIFIED BRILLIANT**  
10.79 X 7.49 X 5.25 MM  
4.05 CARATS  
FANCY VIVID PINK  
VS 2  
70.1%  
65%  
Thick  
Pointed  
EXCELLENT  
VERY GOOD  
SLIGHT  
IGI LG642431407

Comments: This Laboratory Grown Diamond was created by Chemical Vapor Deposition (CVD) growth process.  
Indications of post-growth treatment.