



ELECTRONIC COPY

LABORATORY GROWN DIAMOND REPORT

October 11, 2024	
IGI Report Number	LG642428830
Description	LABORATORY GROWN DIAMOND
Shape and Cutting Style	PRINCESS CUT
Measurements	8.02 X 7.98 X 5.55 MM

GRADING RESULTS

Carat Weight	3.00 CARATS
Color Grade	FANCY VIVID BLUE
Clarity Grade	VS 1

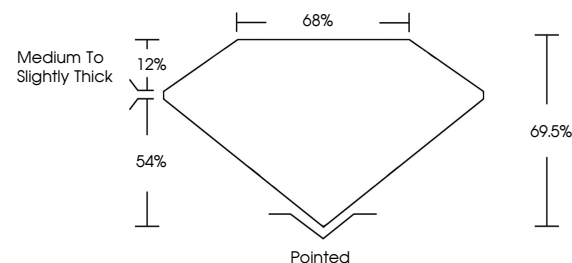
ADDITIONAL GRADING INFORMATION

Polish	EXCELLENT
Symmetry	EXCELLENT
Fluorescence	NONE
Inscription(s)	151 LG 642428830

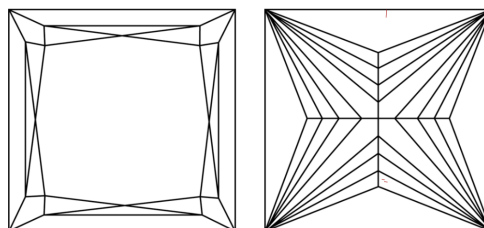
Comments: This Laboratory Grown Diamond was created by Chemical Vapor Deposition (CVD) growth process.
Indications of post-growth treatment.

LG642428830
Report verification at [igi.org](https://www.igi.org)

PROPORTIONS

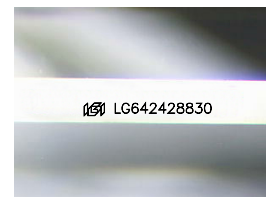


CLARITY CHARACTERISTICS



KEY TO SYMBOLS

Red symbols indicate internal characteristics.
Green symbols indicate external characteristics.



Sample Image Used

COLOR

D E F G H I J Faint Very Light Light

CLARITY

IF	VVS ^{1,2}	VS ^{1,2}	SI ^{1,2}	I ^{1,3}
Internally Flawless	Very Very Slightly Included	Very Slightly Included	Slightly Included	Included



© IGI 2020, International Gemological Institute

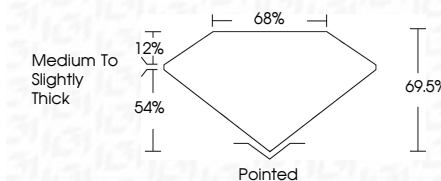
FD - 10 20

www.igi.org

LABORATORY GROWN DIAMOND REPORT



October 11, 2024	
IGI Report Number	LG642428830
Description	LABORATORY GROWN DIAMOND
Shape and Cutting Style	PRINCESS CUT
Measurements	8.02 X 7.98 X 5.55 MM
GRADING RESULTS	
Carat Weight	3.00 CARATS
Color Grade	FANCY VIVID BLUE
Clarity Grade	VS 1



ADDITIONAL GRADING INFORMATION

Polish	EXCELLENT
Symmetry	EXCELLENT
Fluorescence	NONE
Inscription(s)	 LG642428830

Comments: This Laboratory Grown Diamond was created by Chemical Vapor Deposition (CVD) growth process.
Indications of post-growth treatment.



October 11, 2024	G1 Report No. LG542028830	
FANCINESS CUT		
0.02 X 7.98 X 5.55 MM	3.00 CARATS	
Carat Weight	FANCY VIVID BLUE	
Color Grade	VS 1	
Clarity Grade	66.5%	
Depth	68%	
Table	Medium to Slightly Thick	
Grain		
Color	Painted	
Clarity	EXCELLENT	
Symmetry	EXCELLENT	
Fluorescence	NONE	
Inscription(s)	681 LG542028830	
Comments:		
This Laboratory Grown Diamond was created by Chemical Vapor Deposition (CVD) and shows no growth indicators of post-growth treatment.		